

2015



Summer Programs for Gifted and Academically Talented Students

3-week Residential and Commuter Sessions | Ages 9-17



Enriching minds where creativity thrives

Bryn Mawr College, Emory University, Princeton University, UC Berkeley, UCLA, University of Chicago, University of Miami, Vassar College, and Yale University

– Unique academic exploration in STEM, Humanities, Arts, and Fitness courses –

a program of **NSGT**

GiftedStudy.org



Welcome!

Dear Parents, Students, & Educators,

2015 marks the 31st year that Summer Institute for the Gifted (SIG) has been providing summer residential academic programs for gifted and academically talented youth.

In this catalog, you will find information about our campuses, our programs and services, and, most importantly, our courses. As you read through this information, we think you will become as excited as we are about SIG, as our programs are purposely designed for gifted and academically talented students, resulting in the transformational SIG experience.

We are excited to add new sites to our SIG lineup this year, including a residential and commuter program for ages 9-17 at the University of Miami in Coral Gables, FL, as well as a day program for ages 5-8 at the same location! Another new SIG Day Program will be held at the Weiss School in Palm Beach Gardens, FL, for ages 5-12. Come enjoy the beauty and sunshine of Florida while also stimulating your mind at these new sites.

Don't forget our ongoing online SIG courses as well, for ages 7-12. Online course information is available on page 40 and on our website.

We are passionate about our mission here at SIG. We are focused on "enriching minds where creativity thrives" and are highly engaged with students on their paths of self-discovery and empowerment. We invite you to support us in that mission in whatever way you can. Please read about NSGT, our charitable parent organization, on page 42 and on our website.

Take a look, engage, and join us in 2015!

Barbara Swicord, Ed.D.

Executive Director, National Society for the Gifted and Talented
President and CEO, Summer Institute for the Gifted

Our Mission

The mission of the Summer Institute for the Gifted is to provide the highest quality educational and social opportunities for academically gifted and talented students through programs designed to meet their abilities and needs.

What is SIG-nificance?

SIG•nif•i•cance {sig-nif-i-kuhns} (n.) – A feeling of knowing who you are and where your life is headed, similar to the feeling one gets when being part of Summer Institute for the Gifted.



Table of Contents

Why Choose SIG?.....	4	Courses.....	10
The Importance of Gifted Education.....	5	SIG Campuses.....	18
Admissions Requirements.....	5	International Student Information.....	37
Program Options.....	6	Program Fees.....	38
SIG Staff.....	6	Payment Schedule.....	38
Student Activities.....	7	Program Insurance.....	39
Safety, Security and Health.....	7	Other Programs of NSGT.....	40
Typical SIG Schedule.....	7	How to Apply.....	41
Academics.....	8	National Society for the Gifted and Talented.....	42
Instructional Techniques.....	8	Need-Based Financial Assistance and Scholarships.....	43
Choosing Courses and Making Your Schedule.....	9		

SIG Residential and Commuter Program Campuses

Residential and commuter programs are open to students who will be ages 9-17 by August 31, 2015. Day programs are also available for students ages 5 to 12. For information see page 40 or visit GiftedStudy.org.



Bryn Mawr College.....18
Ages 9-14
July 5 - July 25, 2015



Emory University.....20
Ages 9-17
June 21 - July 11, 2015



Princeton University.....22
Ages 13-17
July 26 - August 15, 2015



UC Berkeley I & II.....24
Ages 9-17
Session I: June 20 - July 10, 2015
Session II (SIG Global): July 12 - August 1, 2015



UCLA.....26
Ages 9-17
July 5 - July 24, 2015



University of Chicago.....28
Ages 9-17
July 19 - August 8, 2015



University of Miami.....30
Ages 9-17
July 12 - August 1, 2015



Vassar College.....32
Ages 9-14
July 12 - August 1, 2015



Yale University I & II.....34
Ages 13-17
Session I: June 27 - July 17, 2015
Session II (SIG Global): July 19 - August 8, 2015

SIG is a program of NSGT, a charitable 501(c)(3) organization, separately administered and operated by SIG, and is independent of any existing education program associated with any of our host campuses.

Why Choose SIG?

Enriching minds where creativity thrives ...and other great reasons to choose SIG!

Well-Rounded Programming

Through 30 years of experience, we have crafted a 3-week program that combines challenging academics with social, cultural, and recreational opportunities to nurture students' social skills, as well as enhance their natural talents and abilities.

Diverse and Innovative Academics – a SIG exclusive!

The SIG curriculum is uniquely designed to develop critical, complex, and creative thinking. Courses are offered in a wide range of disciplines, allowing students to enhance existing talents while acquiring new ones. Courses are available in several fields including: humanities; math, science and technology; multi-disciplinary; and visual and performing arts. Fitness and recreational opportunities such as swimming, fencing, and self-defense are also available.

Qualified and Dedicated Staff

As academics are at the forefront of the SIG experience, we undergo a rigorous selection process for our staff, including our Instructors. SIG Instructors have expertise in the topic of their courses as well as experience working with gifted and talented students. Most Instructors are local, professional teachers from public and independent elementary and secondary schools.

Outstanding Facilities

SIG Residential Programs are held at several prestigious colleges and universities including Princeton University, Yale University, and UC Berkeley. We are selective in our campus facilities to allow students to experience the energy and excitement of campus life, while being part of a well-staffed and well-supervised program.

Health, Safety, and Security

Student safety, security, and health are our top priorities at SIG. Students and staff can be reached 7 days a week at the on-campus SIG office. All SIG Residential Programs have a registered nurse living on campus for the duration of the program.

Variety of Program Options

A commuter option is available at all SIG Residential campuses. For students ages 5-12, SIG offers a variety of day-only programs nationwide. We also offer 8-week online learning programs throughout the year for ages 7-12. See page 40 and visit GiftedStudy.org for details.

For assistance in selecting the best campus, program or courses for your child, contact us today at 866.303.4744.



The Importance of Gifted Education

As many school districts across the country face crippling budget and funding cuts, gifted education programs are being reduced or eliminated. As this trend continues, increased numbers of gifted children are not provided sufficient guidance to maximize their full potential through schools. In addition to continuous advocacy, there is now an unprecedented need for dynamic and innovative approaches for supplementing the education of our world's most gifted and talented students. The unique, targeted, and experienced curriculum of the SIG program provides your students with the ideal complement to their current educational program - no matter the school's budget, funding, or interpretation of giftedness - ensuring that they receive the individual attention they require.



Admissions Requirements

All Summer Institute for the Gifted programs require evidence of high academic ability and/or achievement. Documentation can be submitted at the time of application in the form of test scores, gifted program acceptance letters or other applicable evidence of giftedness. Students applying to the Residential/Commuter Program must be ages 9-17 by August 31, 2015 (students must be ages 13-17 for Princeton University and Yale University and 9-14 for Bryn Mawr College and Vassar College).

Domestic Students

Students who meet **at least ONE** of the following criteria are invited to apply to SIG:

- Students who have scored at the 95th percentile or above in at least one of the major content areas or ability sections of a nationally-normed standardized test. For a full list of recognized tests, please visit GiftedStudy.org/tests.asp. State criterion reference tests will only be accepted in cases where scaled score equivalents are provided and where the student scores correlate to a state percentile ≥ 95 . Test scores must be current within the previous two years.
- Students who have scored in the gifted range on the PSAT, SAT, ACT or SSATB. For students taking the SAT, the code number for reporting scores to SIG is 0375.
- Students who have participated in Academic Talent Searches.
- Students who have been identified as gifted and/or who have participated successfully in a local or school gifted program.
- Students who have scored at least two standard deviations above the mean, or at the 95th percentile level or higher on any individual or group-administered, nationally-normed, standardized, intelligence assessment.
- Alternatively, if none of the above forms of eligibility is available, two Recommendation Forms can be submitted by educators who are familiar with the student's academic record, performance, and potential. The SIG Recommendation Form is available online at GiftedStudy.org. Educators may submit confidential forms electronically or via hard copy.

International Students

We welcome our international students (defined as any student requiring a visa to attend) and value the richness of diversity in culture and orientation they bring to our programs. International students submit the same eligibility documents as domestic students and in addition need to demonstrate a high level of English language proficiency in speaking and writing to integrate successfully into the SIG academic program. A Skype interview also may be required. Please visit GiftedStudy.org for detailed admissions and program information for international students.

Helpful Hints for the Application Process:

- Please submit your application prior to, or in conjunction with, eligibility documents. This process will speed the admissions decision.
- Please be consistent with one name on all documents.
- Please be consistent with one primary email address as all communications are sent to the primary email only.

Program Options Chart

At most campuses, students may choose to live on campus (residential status) or commute daily (commuter or extended commuter status). Please refer to this chart for information regarding each option.

Activity	Commuter Program (8:30 am - 5:30 pm) *	Extended Commuter Program (8:30 am - 9:15 pm) *	Residential Program
Breakfast			✓
All 4 Academic Periods	✓	✓	✓
Lunch	✓	✓	✓
Recreation Hour	✓	✓	✓
Dinner		✓	✓
Evening Tutorial		✓	✓
Evening Activities		✓	✓
Saturday Getaway Trip		✓	✓
Sunday Activity Day			✓
Dance		✓	✓
Student Talent Show		✓	✓
Final Performance	✓ **	✓	✓
Closing Ceremony	✓ **	✓	✓
Dorm Residence			✓

* Exceptions to the commuter student time schedules are not possible as safety procedures are compromised when staff must modify their supervision responsibilities to accommodate exceptions.

** Must be accompanied by parent or guardian.



Did you know?

Over **70%** of our 2014 Instructors have earned a Masters degree or Doctoral degree.

SIG Staff

The SIG program is supported by a multi-tiered staffing structure on campus and is composed of the following positions[^]:

Director

Experienced professionals oversee all aspects of the program on campus.

Deans

Experienced administrators and educators who supervise:

- Academics
- Residential Life
- Student Activities

Housemasters

Experienced educators and administrators manage and supervise a residential house of males or females.

Residential Assistants and Counselors

Undergraduate and graduate students also function as teaching assistants.

Instructors

SIG Instructors commute daily and typically are local professional teachers from public and independent elementary and secondary schools.

Nurse

An on-site SIG nurse is available 24 hours a day.

Office Staff

The Director is supported by an Office Manager and the Academic Dean is supported by an Academic Dean Assistant.

[^]All staff are residential except for Instructors.

Student Activities

Student activities enhance the challenging academic curriculum through additional social and cultural interaction. These activities include:

Recreational Hour

Held after the last course period, students may participate in swimming, tennis, basketball, volleyball, soccer, chess, and creative arts or relax and hang out with friends. Activities vary by campus.

Weekend Activity Days

On-campus Activity Days involve the entire group in social as well as intellectual engagement.

Saturday Getaway Day

An off-campus trip is planned for one Saturday to a local amusement park.

Evening Activities

These may include movie nights, counselor group activities, student theater performances and dances, as well as the SIG Talent Show, Brain Bowl (academic trivia challenge), and Casino Night.

Final Program

The final program is held on the last academic day and celebrates the SIG experience.

Safety, Security, and Health

Student safety, security and health are our first priority at SIG. All SIG programs are held at safe campus locations and have access to campus security. Students are accompanied by a Counselor or SIG staff member on and off campus.

Typical SIG Schedule*

7:30 a.m.	Rise
8:00 - 8:45 a.m.	Buffet-style Breakfast
8:30 a.m.	All Commuter Students Arrive
8:45 - 10:15 a.m.	Period 1 - Creative Connections**
10:30 - 12:00 p.m.	Period 2 - DNA Diagnostics**
12:00 - 1:00 p.m.	Buffet-style Lunch
1:00 - 2:30 p.m.	Period 3 - Working the Future**
2:45 - 4:15 p.m.	Period 4 - Synaptic Plasticity**
4:30 - 5:30 p.m.	Recreational Hour - Play sports and games, do arts and crafts! Try a different activity every day.
5:30 p.m.	Commuter Students Leave
5:30 - 6:00 p.m.	Dorm Time
6:00 - 6:45 p.m.	Buffet-style Dinner
7:00 - 8:00 p.m.	Evening Tutorial – Finish assignments, work on projects, problem solve and consult with your TA!
8:15 - 9:15 p.m.	Evening Activities - Have fun with counselor group activities, play Brain Bowl, participate in a talent show, Casino Night or dance, or enjoy some free down time.
9:15 p.m.	Extended Commuter Students Leave
9:15 - 9:45 p.m.	Dorm Time for Junior Students
9:45 p.m.	Junior Lights Out
9:15 - 10:30 p.m.	Dorm Time for Senior Students
10:30 p.m.	Senior Lights Out

* Schedules may vary by campus

** Sample courses

Let your personality shine!



Enjoy Saturday Getaway day!



Join the SIG Talent Show!



Participate in relay races on campus!



Academics

Our Academic Approach

The curriculum at SIG is based on a model of academics that involves enrichment and acceleration. We offer open-ended and flexible courses in multidisciplinary fields that encourage students to explore interests and passions, as well as engage in concepts that they may not encounter in core school curriculum at their age level, and to progress within those concepts at a rigorous and challenging pace that is appropriate for them. Each course is conceptual in its description and will therefore vary somewhat by campus as it evolves according to students' interests and needs. The beauty of offering a summer learning environment is the luxury of not being constrained by tests, prescribed curriculum parameters, and the limitations of pre-determined products and assessments. This luxury enhances an environment that strives to unleash the abilities, ideas, and thinking of fertile minds in ways that allow students to enhance, discover, and pursue their talents and passions.

This type of learning environment is productive for most types of gifted and talented learners – those who have demonstrated advanced abilities through traditional achievement and assessments and those who are creative, productive problem-solvers who show great potential in wide-ranging

human endeavors. Each learner is treated as unique. We encourage students to accept responsibility for the direction of their learning and to participate in self-assessment while at SIG, through informal preferences as well as through the development of personal objectives. We understand that learning is most effective when students enjoy their classes. Therefore, we encourage our Instructors to use real and authentic content that addresses the skills, interests, and learning styles of each student. In a three-week program, our goal is to stimulate ideas on an individual level and expand the ways young people think and approach challenges as they construct their own understandings while proceeding along their lifelong journeys of learning.

Parallel to the academic enrichment program is our social/emotional component, so it is fitting to mention briefly this component within our approach to academics. We believe that students' emotional happiness is paramount to their overall self-fulfillment and is as important in our programs as is the academic component. We design our programs and student activities to enhance social interaction, acceptance, and fun to the greatest extent possible. Students consistently report that long-lasting friendships are among the most meaningful long-term benefits of their SIG experience.

Instructional Techniques

We design instruction to challenge the student through course content, processes, and products within a learning environment that is flexible and open-ended. Instructors direct activities and content around the central concept of the course. Our goal is for students to engage in cognitive processes that require critical, complex, and creative thinking and problem solving. Instructors begin each course by assessing the knowledge and skills that students bring to each course.

Course activities deliver and enhance course content and objectives in meaningful and relevant ways. Students are encouraged to apply newly gained knowledge to real and authentic problems and situations through products that are as typical as possible of professionals in selected fields of study. Students are further encouraged to apply self-, peer-, and Instructor-generated criteria to the assessment of their processes and products for the purpose of personal growth and awareness. Our hope is that students will continue to pursue interests, questions, and projects that they began during a SIG session well into the coming year and beyond, on their personal academic journeys, as they delve deeply into studies that interest and intrigue them.

Academic Performance & Student Evaluation

Parents receive a final Student Performance Review that assesses personal accomplishments and attainment of goals. This report is available online by mid-September and can be sent to the student's school with parental permission. A letter indicating successful student participation in, and completion of, the Summer Institute for the Gifted program also can be sent to the student's school if parents so indicate.

Choosing Courses and Making Your Schedule

Once you have chosen your campus, it is time to select your courses and customize your SIG experience. SIG is committed to fostering the recognition of each student's unique abilities as well as providing opportunities to explore new interests. We encourage students to choose a course schedule that includes areas of passion and strength, but also allows for the exploration of new interests. Students may take four classes in the four-period day. All campus courses are ninety minutes long and run for 15 sessions during the three week program.



Tips on Choosing Courses and Making Your Schedule

The most important thing to consider when choosing courses is to create a schedule that helps the student develop individual passions and also pursue topics of interest. We suggest that parents with any academic questions or concerns contact the SIG office. Here are guidelines we have found helpful:

- Choose two courses within an area of strength, such as science or humanities.
- Try a course in a new area of interest!
- Choose a course from our arts or fitness offerings.

A computer lab is provided on most campuses for access during available times. While personal computers are not required, they are recommended for many courses.

Students can change courses on the second academic day only, as long as an appropriate course alternate is available. Students may drop a course at any time and have a daytime, self-directed study period instead. The daytime study period is not listed in the schedule, but may be arranged on campus through the Academic Dean.

Evening Study/Tutorial Period

SIG provides a nightly Study/Tutorial period for residential and extended commuter students. This self-directed study period allows additional time to conduct research and to work on individual and group projects.

Please Note: Not all courses run at all campuses. Students must choose alternative courses in case a selected class is at capacity or is not offered due to under-enrollment. We also encourage students to apply early to increase their chances of getting their first choice courses. Our final schedule of courses is reflective of the preferences of students enrolled at that campus. Course schedule adjustments by campus occur in April. Students may transfer to another campus as long as there is space on the alternate campus.

“The diversity of courses exposes my child to different subjects and topics. My son told me “In SIG, I am not looking for how good my exam marks are, but targeting where my interests are.”

– Pierra, SIG Parent, SIG at UC Berkeley

“This was our daughter’s first SIG and it was a transformational experience for her. We hope she can come back next year and continue to be immersed in an informative and challenging learning environment.”

– Abheya, SIG Parent, SIG at Bryn Mawr



Courses*

In the following section, you will find all available courses segmented into levels for each age group. Courses are grouped by topic, based in the Humanities, Math/Science/Technology, and Multi-Disciplinary Curriculum. For more information on creating your schedule for a specific campus, see pages 11 - 17. Courses are categorized as follows:

E	E LEVEL COURSES Open to students who will be ages 9-10 by August 31, 2015	11
J	J LEVEL COURSES Open to students who will be ages 11-12 by August 31, 2015	12
M	M LEVEL COURSES Open to students who will be ages 13-14 by August 31, 2015	13
S	S LEVEL COURSES Open to students who will be ages 15-17 by August 31, 2015	14
A	A LEVEL COURSES - VISUAL AND PERFORMING ARTS Open to all students unless otherwise indicated.....	16
R	R LEVEL COURSES - FITNESS AND RECREATION COURSES Open to all students.....	17

** Final schedule of course offerings may vary by campus. All courses in this catalog, unless otherwise stated, are the property of the National Society for the Gifted and Talented. Copyright and other intellectual property laws protect these materials. Reproduction or retransmission of the materials, in whole or in part, in any manner, without the prior written consent of the copyright holder, is a violation of copyright law.*

Extended course descriptions are listed online at GiftedStudy.org.



E Courses –

Open to students ages 9 and 10 by August 31, 2015

For extended course descriptions please visit GiftedStudy.org

HUMANITIES FOCUS

(E13) NEW! Writing the Future: People of almost all historic ages and cultures have attempted to predict the future. Today futurists range from predicting ecological catastrophes to envisioning utopian societies. By imagining, forecasting, and writing about future scenarios for our world, we can create important possibilities and take strategic, problem-solving action.

(E14) Philosophy: Diving into Deep Thoughts: How do you know when something is real? What is fear? What is the most important part of life? Think deeply about these questions, and more, as you dive into philosophy and observe, consider, and discuss the world around you. Pose your own big questions and gain an understanding of some of the philosophical thinkers and thought that have shaped our society and our world.

MATH, SCIENCE AND TECHNOLOGY FOCUS

(E15) Anticipating Algebra: “When will I ever use algebra?” you may ask. Here’s one way. Introduce yourself to algebra by focusing on its real-world applications. In addition to tackling concepts of linear equations and factoring, you also may see how algebra can be fun by exploring games, tessellations, and probability.

(E16) NEW! Unlocking the Genetic Code: Understanding the encryption on your genetic code will open your eyes to a whole new dimension of science: genetics. It was the unique genetic makeup of the infamous “swine flu,” or H1N1, that enabled the virus to traverse animal species and thrive. Gain an understanding of DNA and the processes by which it codes living organisms. Study the structure of the double helix and investigate ways that scientists reengineer it.

(E17) Planetary Science: Putting the ‘U’ in Universe: Planetary science seeks to explain the structures and motions of objects in our solar system. In this class, you’ll examine how our planet’s unique role in the solar system and how changes in the universe affect us. You

will distinguish planets by their properties, sizes, and unique characteristics and study how physics, chemistry, and geology help them evolve. Want more to think about? Consider where we came from. What has happened to our planet over the past billions of years, and what will happen to it in the future? Design your own Mission to Mars, plan a planetary expedition, or design a new way to research the outer planets!

(E18) NEW! Geology: Getting to the Core of the Matter: The planet Earth was formed roughly 4.5 billion years ago and, to this day, 100 billion trillion kilograms of liquid core lie still un-cooled. In this course you will explore additional jaw-dropping phenomena that make life on Earth possible. For example, did you know that Earth is the only planet in our solar system with plate tectonics, and that this phenomenon is necessary for life to flourish? Did you know there are hundreds of interesting geological careers as well? In this course you will learn about gold deposits and mining, fossil fuels and oil drilling, and mineral formation related to rare metals and gems!

MULTI-DISCIPLINARY CURRICULUM

(E19) Spying: Secrets, Surveillance, and Science: Did you know that the newest satellite technology can look into your living room from thousands of miles away in space? Have you ever wondered what it would be like to be a spy and monitor this technology? Did you know that some of the gadgets from James Bond films really exist? Come discover how spies keep—and uncover—secrets. Get an inside look at the science behind spies’ tricks of the trade.

(E20) SIG Monopoly: Money in the Game of Life: Take a lesson from popular board games and explore the concepts of investing, housing, portfolios, and diversification of funds! Investing isn’t just for grown-ups anymore. Today, great ideas can become business ventures for individuals of any age. This class will help you make the most of your money even as a young person. Topics will include savings and interest, income and expenses, and the basics of the stock market.

(E21) NEW! Aspiring Architects: Architecture has afforded humans with the opportunity throughout history to combine the functional needs of human safety, protection, and activity with beautiful forms of self-expression. Architecture of the present and future offers solutions to ecological and other challenges. In this course you will create an architectural solution to a problem that concerns you. In the process you will delve into architectural concepts, information about inventive projects such as Arcosanti and Victory City, the history of local architecture, and the contributions of such great innovators as Frank Lloyd Wright and Buckminster Fuller.



J Courses –

Open to students ages 11 and 12 by August 31, 2015

For extended course descriptions please visit GiftedStudy.org

HUMANITIES FOCUS

(J26) NEW! Immortal Fiction: Immortal characters play intriguing roles in fantasy fiction and are increasingly popular in current culture. Come explore and celebrate the enduring and important genre of fantasy literature and its immortal characters! In addition to examining elements of mythology and folklore in popular and contemporary works, as well as in traditional pieces, we will trace the influence of humankind's fascination with immortality and eternal life through literature, film, and other media.

(J27) NEW! Legally Speaking: Interested in a career in law, or just want to possess a lawyer's argumentation skills? Come explore some of the elements that make law such an exciting and rewarding profession and learn to win debates. Through public speaking exercises and awareness of legal issues, you will develop persuasive argumentation skills crucial to success in future professions, both legal and otherwise. You will practice skills while enacting trials and assuming the role of judge, jury, prosecutor, defender, or witness.

SCIENCE, MATH AND TECHNOLOGY FOCUS

(J28) Chemistry: The Essential Element: Welcome to the laboratory that is the world in which you live. Experiment with domestic chemicals, environmental materials, foods, and living organisms to discover the chemical nature of substances, their properties, reactions, and uses in daily life. Design a series of experiments to test your hypotheses about the reactions of substances. *Materials Fee: \$25*

(J29) Algebraic Expressions: For those students who have not yet taken Algebra I, let us introduce you to linear and quadratic equations, polynomials, rational functions, and graphing. Class highlights include factoring algebraic expressions and using algebra in solving word problems.

(J30) Online Design: Untangling the Web: Have you ever wondered why some websites are so successful and others are not? Do you know the differences behind the scenes of blogs, Wikis, and photo hosting sites such as Flickr? Come to understand the history of the Internet and the evolution of web design. Learn the ins and outs of designing and implementing a properly functioning website. Through this hands-on, project-based course you will be in charge of

all design aspects from website purpose, page layout, navigation and the intricate technology behind the page. *Materials Fee: \$25*

(J31) Fun with Newtonian Physics: Sir Isaac Newton's three laws of motion laid the foundation of physics. Come explore classical mechanics as applied to everyday backyard rockets, roller coasters, and pinewood derby cars which all use principles of physics! Understanding scientific topics such as speed, momentum, and thrust will help you shoot your rocket higher, design a faster and safer coaster, and bring home first prize at the derby!

(J32) NEW! Biomechanics of Living Creatures: Did you know the strongest animal on the planet is actually a two-inch sized beetle, proportionally speaking? Did you know that, in a scaled comparison of a domestic cat to a horse, both can jump equally as high? Biomechanics uses mathematics to study the biological systems of living creatures. In this course you will explore everything from surface-to-volume limitations of a single cell, to why a whale can remain underwater for extended periods of time.

MULTI-DISCIPLINARY CURRICULUM

(J33) Thinking Inside, Outside, and Beyond the Box: Will you have the next great idea? In 1948, when George de Mestral made a connection between the burrs stuck to his pants and a way to fasten things together (which became Velcro), he was "thinking outside the box". Here is a class that will help you learn to think beyond the expected! People who make unique parallels and see new solutions will become our most valued problem-solvers of the future.

(J34) Taking Stock in Money Matters: Investing isn't just for adults anymore. Young people live in an age when the world of finance is an integral part of everyone's daily life. This class will introduce you to the world of investing so that you can make the most of your money,

even as a young person. Topics will include savings and interest, income and expenses, and the basics of the stock market.

(J35) Move Over Sherlock: How do real detectives solve mysteries? Come examine how modern crime investigators use cutting-edge scientific discoveries to search for evidence, gather clues, and analyze data. Participate in a simulated mystery in which you become the detective, as you learn skills in logic, inductive and deductive reasoning, data collection, and analysis.

(J36) Future City Design: Explore the challenges of the future! Take on the roles of chemical, mechanical, electrical, aeronautical, and civil

engineers as you develop a vision for a future city. Construct a scale model city, showcasing your ideas for future architectural design, transportation, communication, recreation, environmental concerns, and the health and safety of your future citizens.

(J37) NEW LEVEL! Facts, Stats, and Studies: The Methods of

Research: Children laugh over 300 times a day, while adults laugh on average only 15 times a day. Annually, the amount of garbage that is

dumped in the world's oceans is three times the weight of fish caught from the oceans. 45% of Americans don't know that the sun is a star. Have you ever wondered where these interesting statistics originate? Statistics help determine causality and provide tools to help predict future trends and events. In this introductory course, you will learn the basics of research design and statistical collection techniques, as well as data analysis and presentation.



M Courses –

Open to students ages 13 and 14 by August 31, 2015

For extended course descriptions please visit GiftedStudy.org

HUMANITIES FOCUS

(M38) The Writer's Word Palette: Build a vibrant vocabulary and learn the secrets to deciphering new words. Explore the fascinating and often humorous world of word and phrase origins. Increase your verbal reasoning skills. At the same time, gain experience and practice writing effectively and creatively by analyzing and editing your own work. Learn how to create a masterpiece of characterization and setting.

(M39) NEW! Creative Connections: Creative thinking is crucial in a continuously changing world. The ability to find unique solutions is an extremely valued commodity. The good news is that creativity is comprised of skills that all of us can learn. In this course, we help demystify creativity, offering tools and guidelines that you can use to develop your creative capabilities. Explore the lives and work of exceedingly creative individuals, including various elements that led them to become ingenious innovators.

SCIENCE AND MATH FOCUS

(M40) Engineering in Action: Ever wonder how chemical, mechanical, electrical, aeronautical, and civil engineers solve real world problems? Come learn basic engineering principles regarding stability of structures, buoyancy, heat phenomena, and electricity. Perhaps you will use your interest in scientific and mathematical principles to design towns, factories, airplanes, toys, or other concepts to enhance life in the future. *Materials Fee: \$25*

(M41) Medical Microbiology: Study of the human body through medical microbiology is one of the last scientific frontiers. This course introduces human biology and the ground-breaking medical sciences that support it. Medical microbiology fuses medicine and microbiology of microorganisms, including bacteria, viruses, fungi, and parasites, all of which can cause human diseases. In this course, you will examine essential biochemical reactions that occur within the human body. *Materials Fee: \$25*

(M42) Mathematical Masterpieces: Fermi and The Golden Ratio: Discover some of the mysterious concepts of math, such as the golden ratio and Fermi questions. Examine works of architecture to find the "divine proportions" within structures. Dissect the paintings of Leonardo da Vinci to reveal their mathematical mysteries. Construct a golden spiral and find its counterpart in nature and the universe. How many piano tuners are there in New York City? How

does one even approach this question? What does the answer to this question depend upon? Explore such Fermi questions, named after the famed mathematician Enrico Fermi, that require us to take multiple directions when solving a problem.

(M43) Buy! Sell! Trade! Brush Up on Business Math!: Living in a global economy, it is important to understand the ins and outs of making solid financial business decisions. In this course, you will analyze trends in the market, practice making smart decisions with money and investments, and learn how to market a new business.

(M44) Technology: Complex Problems, Simple Solutions: Our world faces many challenges today such as climate change, widespread poverty, diseases, inadequate health systems, and shortages of energy, water, and food. In developing countries, low-tech solutions can be created that use local knowledge and resources in conjunction with sophisticated technology. Solar-powered appliances provide electricity; treadle pumps bring water up from desert areas; sugar cane charcoal provides energy in Haiti, and wheat and rice straw make a fuel in India that minimizes air pollution and supports the local economy. These ideas are just a few of the solutions that international problem solving has generated for people facing challenging situations. Join in the spirit of innovation, ingenuity, and cooperation. *Materials Fee: \$25*

(M45) NEW! DNA Diagnostics: Genomics is a relatively new field of study, beginning in the past century. Genomics evolved from a series of experimental advances that allowed researchers to decipher the DNA sequence of whole genomes from virtually any organism. In this class you will explore genetics and develop an understanding

of animal genomes. With this tool, you will examine the most recent trends in genetic engineering in such areas as foods, agriculture, and human cell research. “Diagnose” the extent to which genomics will affect your life as well as the lives of others.

MULTI-DISCIPLINARY CURRICULUM

(M46) Roots of Human Behavior: Why do we act as we do? Study the psychology of human behavior to help you understand more about yourself. This course will survey past and current theories in human development, mental health, and social relationships, as well as the roots of personality and behavior as seen through the theories of Freud, Skinner, Maslow, and Erickson.

(M47) Theories of Time Travel: Spacetime Physics and Worm-holes: If we could unify quantum gravity, quantum mechanics, and general relativity into one theory, physicists argue that time travel would be possible. Journey with us through a study of black holes, negative energy, and cosmic strings as we research current theories of time travel. Study the experiments of physicists around the world and what they have revealed about paradoxes and mutable timelines.

(M48) International Relations: Ordering a New World: Want to make a difference in the world? Then first you should understand the relationships among countries and states, governmental and non-governmental agencies, and multinational corporations. Today's changes in world politics, economics, and ecological concerns for the planet are creating the need for our nation-based policies to become global in scope. Perhaps you will want to examine such topics as the role of personalities in global decision-making processes, or analyze how science and technology impact global health, business, the environment, technology, and human development.

(M49) NEW! Working the Future: How do we prepare to excel in a future career that may not even exist yet? While we cannot accurately predict what our world will be like 20, 30, or 40 years from now, we can teach ourselves to solve complex problems that can occur in any situation that may arise. We can also teach ourselves how to be self-directed learners who will become knowledgeable and skilled in any field or discipline that proves important and engaging. In this course, develop problem-solving skills that can help keep you “ahead of the curve” no matter what it looks like, and the power to learn well what you need to know in any field or discipline.

(M50) NEW! Synaptic Plasticity: The Adaptable Brain: Did you know that you can alter the ways in which your brain is “wired”? In this class you will think like a neuroscientist and explore how the human brain develops. You will examine topics such as neuroplasticity, genetic circuits, and the nervous system, as well as neural changes resulting from bodily injury. Research from these fascinating topics can be applied to the fields of health, medicine, education, and aging.



S Courses –

Open to students ages 15, 16, or 17 by August 31, 2015
For extended course descriptions please visit GiftedStudy.org

HUMANITIES FOCUS

(S51) Writing Matters: Do you want to move people with your words? This intensive workshop on the varied styles of contemporary authors, and in developing your own writing style, will challenge and motivate you. You will gain invaluable practice in communicating your thoughts, feelings, and knowledge, vividly and expressively, through the written word.

(S52) College Preparation: Learn what you really need to know about the college application process from test taking, to the essay, to the campus visit, to the interview! Write an essay that will impress readers with its unity and coherence. Gain valuable test-taking strate-

gies. Craft a résumé that describes the real you. Practice answering interview questions and behaviors that will make a lasting impression.

(S53) Word Origins for SAT Success: The etymology of words is a fascinating study in unlocking the complexities of linguistic relationships. This class will improve your vocabulary and understanding of word origins. You will practice taking sample tests, learn test-taking tactics, and improve your verbal confidence. You will employ your new vocabulary as you practice writing for the current SAT writing component.

SCIENCE, MATH, AND TECHNOLOGY FOCUS

(S54) NEW! Mathemati-CS of CompSci: Computer science is not all about programming. Long before the land of 1's and 0's was discovered, computational mathematics existed. Programming language involves the challenges of making arguments streamlined and concise, of elements containing algorithms, and of logical proofs. In this class you will explore the graph theory, logic, and discrete math that establish a mathematical foundation for computer programming.

Materials Fee: \$25

(S55) Jump Start Your SAT Math Score: Don't sweat those math SATs; prepare for them. This class is designed to help improve your math scores on standardized exams. Using sample practice tests, you will gain the confidence and skill you need to score well on standardized tests. Bring your scientific calculators. Prerequisite: Algebra I and Geometry.

(S56) Cosmic Proportions: The Origin and Structure of the Universe: Cosmologists research the origins and structure of our universe, which they believe began 15 billion years ago. Starting from the simplest components, the universe has self-organized to an astonishing level of complexity. One of the most important discoveries in cosmology is that the expansion rate of the universe is accelerating. In this class you will gain an understanding of theories about the origins of the universe and investigate some of science's most difficult questions.

(S57) Pharmacology: In classical Greek language, *pharmacology* translates to the study of poison, though modern Greek translates *pharmakon* to the word *drug*. Pharmacology is a biomedical science

field that encompasses many different areas of study, including drug design and creation, mechanisms in the body, from the molecular level to organs and systems, toxicology, and biochemical reactions and interactions. In this course, study the effects of pharmaceuticals, both on a small scale, on the individual human body, and also on the grander scale of our culture and society. Investigate a pharmacological area of interest and research how the chemical reactions of certain drugs change the body's systems and behaviors. *Materials Fee:* \$25

(S58) Biopsychology: Why do you react a certain way or feel the way you do in response to external influences? The answer may be found in biopsychology, a branch of psychology that examines how the brain and neurotransmitters act upon the body, influencing what we do, say, and feel. This field draws heavily on neuroscience and includes study of the brain, the nervous system, and neurotransmitters. Anatomy, physiology, and statistics are also essential in the study of biopsychology.

(S59) Bioengineering: Technology for the Future: Bioengineering integrates physical, chemical, and mathematical principles in the study of biology, medicine, behavior, and health. From biomechanics and biomagnetics to genomics, in this course, you will take a look at the brief history of this emerging and exciting field. Investigate a branch of bioengineering that interests you, such as medical engineering, agricultural engineering, bionics, biochemical engineering, human factors engineering, or environmental engineering.

MULTI-DISCIPLINARY CURRICULUM

(S60) NEW! Improvement Science: Learn fast, fail fast, improve quickly. Such is the mantra of Improvement Science where invested participants seek to make quick improvements around a local problem. Improvement research synthesizes the best of what we have learned, rapidly develops and tests potential improvements, implements what is found to work in the system of the problem, and adds to our knowledge to make continuous improvements surrounding the concern.

(S61) The Macroeconomics of Globalization: Globalization--the integration of capital, technology, and information across national borders -- is creating a single global market. Globalization is as old as the human race, but its magnitude is unique to this century. Mac-

roeconomics deals with the performance, structure, behavior, and decision-making of an economy as a whole, rather than individual markets. This course will look at the whole-market approach of our increasingly global economy.

(S62) Crime Scene Investigation: Learn fingerprinting, hair analysis, handwriting analysis, and the importance of chain of custody when solving a crime. This introduction to forensic science will cover evidence collection guidelines, photography, profiling, and career training. Crime scene investigators draw upon their knowledge of chemistry, biology, physics, entomology, botany, and computer science to solve their mysteries. Investigate whether this could be a career for you.



Visual and Performing Arts Courses – Open to all ages, 9 through 17, unless otherwise noted. For extended course descriptions please visit GiftedStudy.org

(A63) Digital Photography: Digital photography has changed the world of image recording. Learn how to enhance your own photographs to express yourself through a captured moment. If you like computers and cameras, this course is for you. You must bring your own digital camera to participate in this class. A 1G flash drive is highly recommended as well. *Ages 13-17 at every campus except Bryn Mawr and Vassar where it is open to students who are 11-14 years old.*

(A64) Two-and Three-D Media: Drawing and Sculpting: Express yourself in pencil, ink, watercolor, or three dimensions. Develop your techniques in perspective, light, shading, and color theory. Learn the fundamentals of positive and negative space. Create an original, displayable work. *Materials Fee: \$25*

(A65) Animation and Claymation: Walt Disney is well known for contributions to the world of animation, but have you ever wondered how filmmakers create animated films? Did you know that the first clay animated films were produced in 1908? Come and discover the intricate and wonderful world of animation and claymation from Mickey Mouse to *The Pirates! Band of Misfits*. A combination of story writing, script writing, art, photography and computers make for a fun-filled experience. See if you have the patience and stamina required to create a (very) short cartoon. You must bring your own digital camera to participate in this class. A 1G flash drive is highly recommended as well. *Ages 9-12 only. Materials Fee: \$25*

(A66) Improv 101: You'll Laugh, You'll Cry, You'll Improvise!: This combination of dramatic and comedic improvisation will help you gain confidence in your ability to perform spontaneously, improve your storytelling skills, think on your feet, and improve your teamwork and communication skills. Focus will be given to creating a stage presence, developing scenes, and projecting a character to the audience through coaching, warm-ups, games, and short scene work. Great practice for developing creativity, trust, and cooperation in a fun atmosphere! *Ages 13-17 only.*

(A67) Broadway Beckons: Sing! Dance! Act!: The show will go on! Learn vocal techniques, dance and movement exercises, and character acting skills-all pertaining to a selected production. The class will present a mini-musical presentation at the end of the three-week session. *Some recreation hour rehearsals may be required.*

(A68) The Art of Making a Short Film: Did you know that Tim Burton got his start in short film production? Before *Edward Scissorhands* and *Frankenweenie*, Burton wrote and directed short films, such as *The Island of Doctor Agor* and *Stalk of the Celery Monster*. In fact, Burton still finds a creative outlet in directing and producing short films. A short film, whether animated or live action, is less than 40 minutes long, according to the Academy of Motion Picture Arts and Sciences. Analyze the various features of short films and evaluate the entertainment value of short, compared to feature length, films. Come learn the trade of award-winning directors like Martin Scorsese and Wes Anderson and film your own SIG short film. *Materials Fee: \$25*





Fitness and Recreation Courses — All fitness and recreation courses are instructional and are for all ages, 9 through 17. Classes vary by location; see individual campus schedules for details on campus offerings. For extended course descriptions please visit GiftedStudy.org

(R69) Fit for Life: Enjoy your life to its fullest extent by being strong, healthy, and energetic. This course will help you do this through assessing your present state of fitness, making personal goals, individualizing your fitness activity according to your abilities, interests, needs, and preferences, and learning more about the roles nutrition and emotion play in an overall approach to physical health. You will exercise what you learn in class and gain a holistic approach to lifelong fitness.

(R70) Fencing: Footwork to Foils: Fencing is the sport of aristocrats and a great way to connect mind and body! For novices, this class will develop basic technique, form, finesse, and balance essential for success as a fencer. Refine your skills as you are paired with others of similar ability. The foil technique will emphasize a strong defense and body attack. *Foils and fencing equipment are provided.*

(R71) Self-Defense Sense: Self-defense strategies are important, not only in self-protection, but also in building physical and mental discipline. This class will help you present a commanding presence as you gain control and confidence through such strategies as awareness of your surroundings, wrist escapes, defense against body holds, and blocking. A healthy lifestyle is built on self-discipline, fitness, and goal setting – the foundations of effective self-defense!

(R72) Arrows, Bows, and Crests: The ABCs of Archery: The sport of legends, come and see if it is as easy as it looks to hit a target! Practice the finer points of archery on a full-sized range while you learn this time-honored sport. *Bows and arrows are provided. Held at Bryn Mawr only.*

(R73) Tennis: Love and Lobby: Learn the basics of scoring, strokes, volleys, and serves. For those students who have already developed intermediate level playing skills, this class will give you the opportunity to perfect your strokes, learn new strategies, and improve your game play by competing against other experienced players in the class. Bring your tennis racquet to camp! *Held at Vassar and UC Berkeley only.*





Bryn Mawr College

Bryn Mawr, PA

Session Dates:

July 5 - July 25, 2015

Open to:

Students who will be ages 9 - 14 by August 31, 2015

Program Fees:

Residential: \$3,995

Extended Commuter: \$3,195

Commuter: \$2,495

About Bryn Mawr College

Bryn Mawr is one of the world's most distinctive, distinguished colleges, located 11 miles west of Philadelphia on a beautiful, 135.5-acre campus in Montgomery County. It was the first higher education institution to offer graduate degrees, including doctorates, to women. Its history has been defined by a commitment to intellectual rigor and freedom of conscience. The Bryn Mawr buildings are truly original in their adaptation of Jacobean Gothic and possess romance and charm.

Fun Facts!

- You can get a 360-degree look at sample dorm rooms at <http://www.brynmawr.edu/residentiallife/tours/360/>
- During the decades surrounding World War II, Bryn Mawr became home to many distinguished European scholars who were refugees from Nazi persecution.
- SIG has been on campus since 1987 and its compact campus is a perfect location for a first-time SIG student.
- A **SIG Day program** is also available at Bryn Mawr College for students ages 5 through 8. See page 40 for more information.

“Not only did my son come to enjoy the fun and challenges of the learning environment, he also enjoyed an immense turning point in his life...the faculty and staff 'got' my son when he needed it most. For him to experience such support, especially in a learning environment, is unique and priceless--my son learned that there are people who care, who understand, and, best yet, who are willing to patiently help. My son proudly announced at the graduation ceremony that he wants to return next year for the residential program! Thank you, SIG.

– **Parents of Logan R.**,
Alumna of SIG at Bryn Mawr College

Please note: SIG is a program of NSGT, a 501(c)(3) organization, separately administered and operated by SIG, and is independent of any existing higher education program associated with any of our host campuses.

Bryn Mawr College Course Schedule

E COURSES (9 - 10)		J COURSES (11 - 12)		M COURSES (13 - 14)	
PERIOD ONE (8:45AM - 10:15AM)					
E14	Philosophy: Diving into Deep Thoughts	J27	NEW! Legally Speaking	M39	NEW! Creative Connections
E18	NEW! Geology: Getting to the Core of the Matter	J28	Chemistry: The Essential Element	M47	Theories of Time Travel: Spacetime Physics and Wormholes
		J36	Future City Design		
A64	Two- and Three-D Media	A64	Two- and Three-D Media	A64	Two- and Three-D Media
R69	Fit for Life	R69	Fit for Life	R69	Fit for Life
PERIOD TWO (10:30AM - 12:00PM)					
E13	NEW! Writing the Future	J31	Fun with Newtonian Physics	M44	Technology: Complex Problems, Simple Solutions
E15	Anticipating Algebra	J33	Thinking Inside, Outside, and Beyond the Box	M45	NEW! DNA Diagnostics
		J37	NEW LEVEL! Facts, Stats, and Studies: The Methods of Research		
A65	Animation and Claymation	A65	Animation and Claymation	A63	Digital Photography
R72	Arrows, Bows, and Crests: The ABCs of Archery	R72	Arrows, Bows, and Crests: The ABCs of Archery	R72	Arrows, Bows, and Crests: The ABCs of Archery
LUNCH (12:00PM - 1:00PM)					
PERIOD THREE (1:00PM - 2:30PM)					
E17	Planetary Science: Putting the "U" in Universe	J32	NEW! Biomechanics of Living Creatures	M40	Engineering in Action
E21	NEW! Aspiring Architects	J34	Taking Stock in Money Matters	M50	NEW! Synaptic Plasticity: The Adaptable Brain
		J35	Move Over Sherlock		
A67	Broadway Beckons	A67	Broadway Beckons	A67	Broadway Beckons
R70	Fencing: Footwork to Foils	R70	Fencing: Footwork to Foils	R70	Fencing: Footwork to Foils
PERIOD FOUR (2:45PM - 4:15PM)					
E16	NEW! Unlocking the Genetic Code	J26	NEW! Immortal Fiction	M41	Medical Microbiology
E19	Spying: Secrets, Surveillance, and Science	J29	Algebraic Expressions	M49	NEW! Working the Future
		J30	Online Design: Untangling the Web		
A68	NEW! The Art of Making a Short Film	A68	NEW! The Art of Making a Short Film	A68	NEW! The Art of Making a Short Film
R71	Self-Defense Sense	R71	Self-Defense Sense	R71	Self-Defense Sense



Emory University

Atlanta, GA



Session Dates:

June 21 - July 11, 2015

Open to:

Students who will be ages 9 - 17 by August 31, 2015

Program Fees:

Residential: \$3,995

Extended Commuter: \$3,195

Commuter: \$2,495

About Emory University

Emory University, founded in 1863, is ranked 20th among national universities in the U.S. News and World Report's "Best Colleges 2014." Emory is enriched by the legacy and energy of Atlanta, whose downtown is located 15 minutes away. Emory University is recognized internationally as an inquiry-driven, ethically engaged, and diverse community whose members work together collaborating for positive transformation in the world through courageous leadership in teaching, research, scholarship, health care, and social action.

Fun Facts!

- Emory is recognized by the Carnegie Foundation as 1 of only 60 institutions of higher learning named as Engaged Institutions.
- SIG has been on the Emory University campus since 2006!
- A **SIG Day program** is also available at Emory University for students ages 5 through 8. See page 40 for more detail.

Please note: SIG is a program of NSGT, a 501(c)(3) organization, separately administered and operated by SIG, and is independent of any existing higher education program associated with any of our host campuses.

“My child experienced the most exhilarating adventure this past summer at Emory. His peers and counselors, who were from all different countries, brought a whole new perspective as to what the real world is all about! He still keeps in touch with classmates. The educational program was above and beyond, combined with the diverse cultures, and was an experience he will never forget.”

– **Parents of Rachmiel N.,**
Alumna of SIG at Emory
University

Emory University Course Schedule

E COURSES (9 - 10)		J COURSES (11 - 12)		M COURSES (13 - 14)		S COURSES (15 - 17)	
PERIOD ONE (8:45AM - 10:15AM)							
E14	Philosophy: Diving into Deep Thoughts	J27	NEW! Legally Speaking	M39	NEW! Creative Connections	S57	Pharmacology
E16	NEW! Unlocking the Genetic Code	J28	Chemistry: The Essential Element	M47	Theories of Time Travel: Spacetime Physics and Wormholes	S61	The Macroeconomics of Globalization
		J36	Future City Design				
A68	NEW LEVEL! The Art of Making a Short Film	A68	NEW LEVEL! The Art of Making a Short Film	A68	The Art of Making a Short Film	A68	The Art of Making a Short Film
R69	Fit for Life	R69	Fit for Life	R69	Fit for Life	R69	Fit for Life
PERIOD TWO (10:30AM - 12:00PM)							
E15	Anticipating Algebra	J31	Fun with Newtonian Physics	M44	Technology: Complex Problems, Simple Solutions	S60	NEW! Improvement Science
E18	NEW! Geology: Getting to the Core of the Matter	J33	Thinking Inside, Outside, and Beyond the Box	M45	NEW! DNA Diagnostics	S62	Crime Scene Investigation
E20	SIG Monopoly: Money in the Game of Life	J37	NEW LEVEL! Facts, Stats, and Studies: The Methods of Research	A63	Digital Photography	A63	Digital Photography
A64	Two- and Three-D Media	A64	Two- and Three-D Media	A64	Two- and Three-D Media	A64	Two- and Three-D Media
LUNCH (12:00PM - 1:00PM)							
PERIOD THREE (1:00PM - 2:30PM)							
E13	NEW! Writing the Future	J32	NEW! Biomechanics of Living Creatures	M40	Engineering in Action	S51	Writing Matters
E17	Planetary Science: Putting the "U" in Universe	J34	Taking Stock in Money Matters	M50	NEW! Synaptic Plasticity: The Adaptable Brain	S58	Biopsychology
		J35	Move Over Sherlock				
A65	Animation & Claymation	A65	Animation & Claymation	A66	Improv 101: You'll Laugh, You'll Cry, You'll Improvise!	A66	Improv 101: You'll Laugh, You'll Cry, You'll Improvise!
R70	Fencing: Footwork to Foils	R70	Fencing: Footwork to Foils	R70	Fencing: Footwork to Foils	R70	Fencing: Footwork to Foils
PERIOD FOUR (2:45PM - 4:15PM)							
E19	Spying: Secrets, Surveillance, and Science	J26	NEW! Immortal Fiction	M41	Medical Microbiology	S54	NEW! The Mathemati-CS of CompSci
E21	NEW! Aspiring Architects	J29	Algebraic Expressions	M49	NEW! Working the Future	S59	Bioengineering: Technology for the Future
		J30	Online Design: Untangling the Web				
A67	Broadway Beckons	A67	Broadway Beckons	A67	Broadway Beckons	A67	Broadway Beckons
R71	Self-Defense Sense	R71	Self-Defense Sense	R71	Self-Defense Sense	R71	Self-Defense Sense



Princeton University

Princeton, NJ

US News & World Reports

#1

National University
2014

Session Dates:

July 26 - August 15, 2015

Open to:

Students who will be ages 13 - 17 by August 31, 2015

Program Fees:

Residential: \$5,495

Extended Commuter: \$4,695*

Commuter program not available.

About Princeton University

Princeton is a leading research university and outstanding undergraduate college. The University provides its students with academic, extracurricular and other resources that help them achieve at the highest scholarly levels and prepare them for positions of leadership and lives of service in many fields of human endeavor. Princeton was chartered in 1746 as the College of New Jersey and was officially renamed Princeton University in 1896 in honor of its host community of Princeton.

Fun Facts!

- Princeton is ranked No. 1 in the U.S. by the U.S. News and World Report's "Best Colleges 2014" in the category of Best National Universities, and SIG has been on campus since 2004!
- On November 19, 1969, Charles "Pete" Conrad, Class of 1953, became the third person to walk on the moon, and carried a flag during his walk on the moon.

**Please note: Space only allows for a very small number of Extended Commuter students.*

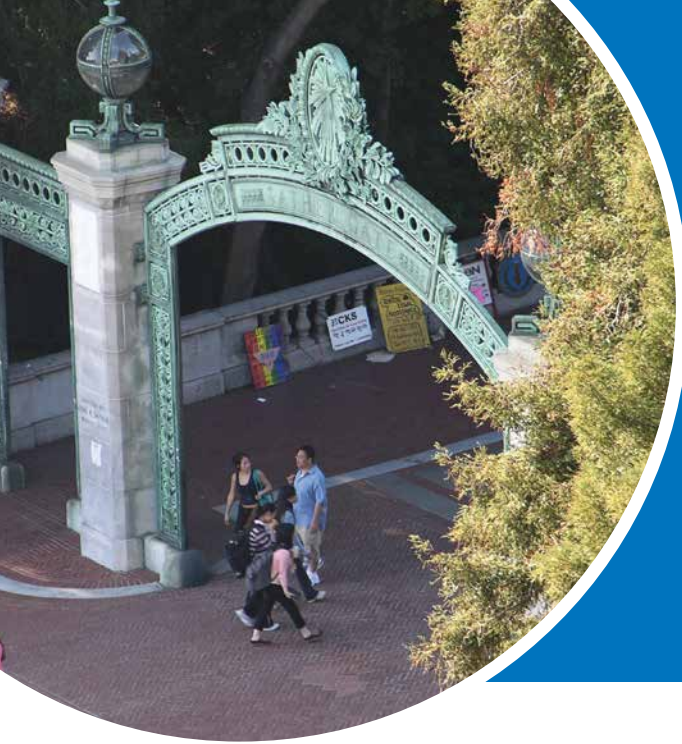
Princeton Course Schedule

M COURSES (13 - 14)		S COURSES (15 - 17)	
PERIOD ONE (8:45AM - 10:15AM)			
M39	NEW! Creative Connections	S51	Writing Matters
M40	Engineering in Action	S53	Word Origins for SAT Success
M41	Medical Microbiology	S54	NEW! Mathemati-CS of CompSci
M43	Buy! Sell! Trade! Brush Up on Business Math!	S55	Jump Start Your SAT Math Score
M45	NEW! DNA Diagnostics	S56	Cosmic Proportions: The Origin and Structure of the Universe
M47	Theories of Time Travel: Spacetime Physics and Wormholes	S57	Pharmacology
M48	International Relations: Ordering a New World	S60	NEW! Improvement Science
A64	Two- and Three-D Media	S62	Crime Scene Investigation
A68	The Art of Making a Short Film	A64	Two- and Three-D Media
R69	Fit for Life	A68	The Art of Making a Short Film
R70	Fencing: Footwork to Foils	R69	Fit for Life
		R70	Fencing: Footwork to Foils

Please note: SIG is a program of NSGT, a 501(c)(3) organization, separately administered and operated by SIG, and is independent of any existing higher education program associated with any of our host campuses.

Princeton Course Schedule

M COURSES (13 - 14)		S COURSES (15 - 17)	
PERIOD TWO (10:30AM - 12:00PM)			
M38	The Writer's Word Palette	S51	Writing Matters
M39	NEW! Creative Connections	S53	Word Origins for SAT Success
M41	Medical Microbiology	S54	NEW! Mathemati-CS of CompSci
M44	Technology: Complex Problems, Simple Solutions	S55	Jump Start Your SAT Math Score
M45	NEW! DNA Diagnostics	S56	Cosmic Proportions: The Origin and Structure of the Universe
M46	Roots of Human Behavior	S57	Pharmacology
M48	International Relations: Ordering a New World	S60	NEW! Improvement Science
		S62	Crime Scene Investigation
A64	Two- and Three-D Media	A64	Two- and Three-D Media
A68	The Art of Making a Short Film	A68	The Art of Making a Short Film
R70	Fencing: Footwork to Foils	R70	Fencing: Footwork to Foils
LUNCH (12:00PM - 1:00PM)			
PERIOD THREE (1:00PM - 2:30PM)			
M38	The Writer's Word Palette	S51	Writing Matters
M40	Engineering in Action	S52	College Prep
M42	Mathematical Masterpieces: Fermi and the Golden Ratio	S53	Word Origins for SAT Success
M46	Roots of Human Behavior	S55	Jump Start Your SAT Math Score
M47	Theories of Time Travel: Spacetime Physics and Wormholes	S58	Biopsychology
M49	NEW! Working the Future	S59	Bioengineering: Technology for the Future
M50	NEW! Synaptic Plasticity: The Adaptable Brain	S60	NEW! Improvement Science
		S61	The Macroeconomics of Globalization
A63	Digital Photography	A63	Digital Photography
A66	Improv 101: You'll Laugh, You'll Cry, You'll Improvise!	A66	Improv 101: You'll Laugh, You'll Cry, You'll Improvise!
R70	Fencing: Footwork to Foils	R70	Fencing: Footwork to Foils
R71	Self-Defense Sense	R71	Self-Defense Sense
PERIOD FOUR (2:45PM - 4:15PM)			
M38	The Writer's Word Palette	S51	Writing Matters
M42	Mathematical Masterpieces: Fermi and the Golden Ratio	S52	College Prep
M43	Buy! Sell! Trade! Brush Up on Business Math!	S53	Word Origins for SAT Success
M44	Technology: Complex Problems, Simple Solutions	S55	Jump Start Your SAT Math Score
M48	International Relations: Ordering a New World	S58	Biopsychology
M49	NEW! Working the Future	S59	Bioengineering: Technology for the Future
M50	NEW! Synaptic Plasticity: The Adaptable Brain	S61	The Macroeconomics of Globalization
		S62	Crime Scene Investigation
A63	Digital Photography	A63	Digital Photography
A67	Broadway Beckons	A67	Broadway Beckons
R70	Fencing: Footwork to Foils	R70	Fencing: Footwork to Foils
R71	Self-Defense Sense	R71	Self-Defense Sense



UC Berkeley I and II

Berkeley, CA

US News &
World Reports

#20

National University
2014

Session Dates:

Session I: June 20 - July 10, 2015

Session II (SIG Global):

July 12 - August 1, 2015

Program Fees:

Residential: \$4,995

Extended Commuter: \$4,195*

Commuter: \$3,295*

Open to:

Students who will be ages

9 - 17 by August 31, 2015

About UC Berkeley

University of California, Berkeley is the leading public university in the country. Berkeley's reputation for academic excellence combined with its beautiful campus and Northern California location make it a unique and exciting educational experience. The roots of the University of California go back to the gold rush days of 1849, when the drafters of the State Constitution, required the legislature to "encourage by all suitable means the promotion of intellectual, scientific, moral and agricultural improvement" of the people of California.

Fun Facts!

- Alumni include Steve Wozniak, cofounder of Apple, and Beverly Cleary, a renowned children's author.
- Over 19 million fossil samples are housed in the Berkeley museum collections.
- SIG has been on campus since 2005!

SIG is a program of NSGT, a 501(c)(3) organization, separately administered and operated by SIG, and is independent of any existing higher education program associated with any of our host campuses.

**The UC Berkeley schedule differs from other campuses. Students will rise at 8:00am and have breakfast from 8:30am - 9:15am. Commuter students will arrive at 9:15am, commuter students pick up time is 6:15pm and extended commuters will depart at 10:00pm.*

Available at UC Berkeley II

SIG Global

While all SIG campuses are open to international students, the second session of SIG at UC Berkeley invites a larger percentage of international students to apply. SIG Global is intended to provide an experience where students can enjoy immersion in international citizenry, pursue topics of global interest in-depth, and fully realize the intense nature of our flattened world.

English Language Learners (ELL) Lab

For students from around the globe looking for the rigorous academic challenge that SIG provides, as well as social interaction with their global peers and an English language study program, SIG is pleased to provide an English Language Learners (ELL) course during Berkeley's SIG Global.

Students must be eligible for the SIG program per the eligibility requirements, however this program will accept students who also require English language support services. Students for whom English is not their first language have the option of taking an ELL Lab (English Language Learners) during one period to improve their English writing and speaking skills and enhance their total SIG experience.

For more information on enrolling as an international student, please turn to page 37.

UC Berkeley I and II Course Schedule

E COURSES (9 - 10)		J COURSES (11 - 12)		M COURSES (13 - 14)		S COURSES (15 - 17)	
PERIOD ONE (9:30AM - 11:00AM)							
E14	Philosophy: Diving into Deep Thoughts	J27	NEW! Legally Speaking	M39	NEW! Creative Connections	S53	Word Origins for SAT Success
E16	NEW! Unlocking the Genetic Code	J28	Chemistry: The Essential Element	M43	Buy! Sell! Trade! Brush Up on Business Math!	S57	Pharmacology
		J36	Future City Design	M47	Theories of Time Travel: Spacetime Physics and ...	S61	The Macroeconomics of Globalization
A68	NEW LEVEL! The Art of Making a Short Film	A68	NEW LEVEL! The Art of Making a Short Film	A68	The Art of Making a Short Film	A68	The Art of Making a Short Film
R69	Fit for Life	R69	Fit for Life	R69	Fit for Life	R69	Fit for Life
ELL	English Language Learners Lab*	ELL	English Language Learners Lab*	ELL	English Language Learners Lab*	ELL	English Language Learners Lab*
PERIOD TWO (11:15AM - 12:45PM)							
E15	Anticipating Algebra	J31	Fun with Newtonian Physics	M42	Mathematical Masterpieces: Fermi and the Golden Ratio	S56	Cosmic Proportions: The Origin and Structure of the Universe
E18	NEW! Geology: Getting to the Core of the Matter	J33	Thinking Inside, Outside, and Beyond the Box	M44	Technology: Complex Problems, Simple Solutions	S60	NEW! Improvement Science
		J37	NEW LEVEL! Facts, Stats, and Studies: The Methods of Research	M45	NEW! DNA Diagnostics	S62	Crime Scene Investigation
				A63	Digital Photography	A63	Digital Photography
A64	Two- and Three-D Media	A64	Two- and Three-D Media	A64	Two- and Three-D Media	A64	Two- and Three-D Media
R71	Self-Defense Sense	R71	Self-Defense Sense	R71	Self-Defense Sense	R71	Self-Defense Sense
ELL	English Language Learners Lab*	ELL	English Language Learners Lab*	ELL	English Language Learners Lab*	ELL	English Language Learners Lab*
LUNCH (12:45PM - 1:45PM)							
PERIOD THREE (1:45PM - 3:15PM)							
E13	NEW! Writing the Future	J32	NEW! Biomechanics of Living Creatures	M40	Engineering in Action	S51	Writing Matters
E17	Planetary Science: Putting the "U" in Universe	J34	Taking Stock in Money Matters	M48	International Relations: Ordering a New World	S55	Jump Start Your SAT Math Score
		J35	Move Over Sherlock	M50	NEW! Synaptic Plasticity: The Adaptable Brain	S58	Biopsychology
A65	Animation & Claymation	A65	Animation & Claymation	A66	Improv 101: You'll Laugh, You'll Cry, You'll Improvise!	A66	Improv 101: You'll Laugh, You'll Cry, You'll Improvise!
R70	Fencing: Footwork to Foils	R70	Fencing: Footwork to Foils	R70	Fencing: Footwork to Foils	R70	Fencing: Footwork to Foils
ELL	English Language Learners Lab*	ELL	English Language Learners Lab*	ELL	English Language Learners Lab*	ELL	English Language Learners Lab*
PERIOD FOUR (3:30PM - 5:00PM)							
E19	Spying: Secrets, Surveillance, and Science	J26	NEW! Immortal Fiction	M41	Medical Microbiology	S52	College Preparation
E21	NEW! Aspiring Architects	J29	Algebraic Expressions	M46	Roots of Human Behavior	S54	NEW! Math of CompSci
		J30	Online Design: Untangling the Web	M49	NEW! Working the Future	S59	Bioengineering: Technology for the Future
A67	Broadway Beckons	A67	Broadway Beckons	A67	Broadway Beckons	A67	Broadway Beckons
R73	Tennis: Love and Lobby	R73	Tennis: Love and Lobby	R73	Tennis: Love and Lobby	R73	Tennis: Love and Lobby
ELL	English Language Learners Lab*	ELL	English Language Learners Lab*	ELL	English Language Learners Lab*	ELL	English Language Learners Lab*

* English Language Learners Lab at UC Berkeley II only.



UCLA

Los Angeles, CA

Session Dates:

July 5 - July 24, 2015*

Open to:

Students who will be ages
9 - 17 by August 31, 2015

Program Fees:

Residential: \$4,995
Extended Commuter: \$4,195
Commuter: \$3,295

** Please note this session
ends on Friday.*

About UCLA

University of California Los Angeles, established in 1919, is the most applied to university in the U.S. From its celebrated faculty to its super high-achieving students, from its distinguished alumni to its myriad contributions to the community, UCLA has attained a stature in the last century to which most institutions of higher education can only aspire.

Fun Facts!

- Alumni include: Francis Ford Coppola, Kareem Abdul-Jabbar and Tom Anderson, creator of MySpace, just to name a few.
- UCLA's Office of Intellectual Property has a total invention portfolio numbering 1,560.
- SIG has been on campus since 2004!

Please note: SIG is a program of NSGT, a 501(c)(3) organization, separately administered and operated by SIG, and is independent of any existing higher education program associated with any of our host campuses.



Lauren completely enjoyed this educational experience. She met friends from around the world with whom she continues to communicate. The exposure to the college campus (in her case UCLA) benefited her very much."

**– Parents of Lauren R.,
Alumna of SIG at UCLA**

UCLA Course Schedule

E COURSES (9 - 10)		J COURSES (11 - 12)		M COURSES (13 - 14)		S COURSES (15 - 17)	
PERIOD ONE (8:45AM - 10:15AM)							
E14	Philosophy: Diving into Deep Thoughts	J27	NEW! Legally Speaking	M39	NEW! Creative Connections	S53	Word Origins for SAT Success
E16	NEW! Unlocking the Genetic Code	J28	Chemistry: The Essential Element	M43	Buy! Sell! Trade! Brush Up on Business Math!	S57	Pharmacology
		J36	Future City Design	M47	Theories of Time Travel: Spacetime Physics and Wormholes	S61	The Macroeconomics of Globalization
A68	NEW LEVEL! The Art of Making a Short Film	A68	NEW LEVEL! The Art of Making a Short Film	A68	The Art of Making a Short Film	A68	The Art of Making a Short Film
R69	Fit for Life	R69	Fit for Life	R69	Fit for Life	R69	Fit for Life
PERIOD TWO (10:30AM - 12:00PM)							
E15	Anticipating Algebra	J31	Fun with Newtonian Physics	M42	Mathematical Masterpieces: Fermi and the Golden Ratio	S56	Cosmic Proportions: The Origin and Structure of the Universe
E18	NEW! Geology: Getting to the Core of the Matter	J33	Thinking Inside, Outside, and Beyond the Box	M44	Technology: Complex Problems, Simple Solutions	S60	NEW! Improvement Science
E20	SIG Monopoly: Money in the Game of Life	J37	New level! Facts, Stats, and Studies: The Methods of Research	M45	NEW! DNA Diagnostics	S62	Crime Scene Investigation
				A63	Digital Photography	A63	Digital Photography
A64	Two- and Three-D Media	A64	Two- and Three-D Media	A64	Two- and Three-D Media	A64	Two- and Three-D Media
LUNCH (12:00PM - 1:00PM)							
PERIOD THREE (1:00PM - 2:30PM)							
E13	NEW! Writing the Future	J32	NEW! Biomechanics of Living Creatures	M40	Engineering in Action	S51	Writing Matters
E17	Planetary Science: Putting the "U" in Universe	J34	Taking Stock in Money Matters	M48	International Relations: Ordering a New World	S55	Jump Start Your SAT Math Score
		J35	Move Over Sherlock	M50	NEW! Synaptic Plasticity: The Adaptable Brain	S58	Biopsychology
A65	Animation & Claymation	A65	Animation & Claymation	A66	Improv 101: You'll Laugh, You'll Cry, You'll Improvise!	A66	Improv 101: You'll Laugh, You'll Cry, You'll Improvise!
R70	Fencing: Footwork to Foils	R70	Fencing: Footwork to Foils	R70	Fencing: Footwork to Foils	R70	Fencing: Footwork to Foils
PERIOD FOUR (2:45PM - 4:15PM)							
E19	Spying: Secrets, Surveillance and Science	J26	NEW! Immortal Fiction	M41	Medical Microbiology	S52	College Preparation
E21	NEW! Aspiring Architects	J29	Algebraic Expressions	M46	Roots of Human Behavior	S54	NEW! Mathemati-CS of CompSci
		J30	Online Design: Untangling the Web	M49	NEW! Working the Future	S59	Bioengineering: Technology for the Future
A67	Broadway Beckons	A67	Broadway Beckons	A67	Broadway Beckons	A67	Broadway Beckons
R71	Self-Defense Sense	R71	Self-Defense Sense	R71	Self-Defense Sense	R71	Self-Defense Sense



University of Chicago

Chicago, IL

US News &
World Reports

#5

National University
2014

Session Dates:

July 19 - August 8, 2015

Open to:

Students who will be ages
9 - 17 by August 31, 2015

Program Fees:

Residential: \$3,995

Extended Commuter: \$3,195

Commuter: \$2,495

About University of Chicago

Located in the community of Hyde Park on Chicago's South Side, just 15 minutes from the city center, the University of Chicago is uniquely positioned to contribute to, and draw from, the strength and diversity of this world-class metropolis.

The University was founded in 1890 by oil magnate John D. Rockefeller and the American Baptist Education Society. Original texts and small session discussions are a hallmark of a Chicago education, which continues to lead in the fields of law, economics, sciences, and many other disciplines. The University of Chicago's firm belief in the value of open, rigorous, and intense inquiry makes it a perfect backdrop for a SIG program.

Fun Facts!

- Ranked #5 among National Universities by US News and World Report for 2014 and the MBA program was ranked #1 by Business Week in 2010.
- Eighty-nine recipients of the Nobel Prize have been students, researchers, or faculty here.
- SIG has been on campus since 2013!

Please note: SIG is a program of NSGT, a 501(c)(3) organization, separately administered and operated by SIG, and is independent of any existing higher education program associated with any of our host campuses.

“The average human lives a total of 3,598 weeks in his lifetime. From this perspective, 3 weeks may not seem like much, but it's enough time to gain a plethora of knowledge, forge the closest of friendships, and create memories to be permanently embedded in our hearts. SIG was a perfect blend of education, laughs, and enthusiasm molded into a summer camp.”

– Kevin T.

Alumnus of SIG at the University of Chicago

University of Chicago Course Schedule



E COURSES (9 - 10)		J COURSES (11 - 12)		M COURSES (13 - 14)		S COURSES (15 - 17)	
PERIOD ONE (8:45AM - 10:15AM)							
E14	Philosophy: Diving into Deep Thoughts	J27	NEW! Legally Speaking	M39	NEW! Creative Connections	S57	Pharmacology
E16	NEW! Unlocking the Genetic Code	J28	Chemistry: The Essential Element	M47	Theories of Time Travel: Spacetime Physics and Wormholes	S61	The Macroeconomics of Globalization
A68	NEW LEVEL! The Art of Making a Short Film	A68	NEW LEVEL! The Art of Making a Short Film	A68	The Art of Making a Short Film	A68	The Art of Making a Short Film
R69	Fit for Life	R69	Fit for Life	R69	Fit for Life	R69	Fit for Life
PERIOD TWO (10:30AM - 12:00PM)							
E15	Anticipating Algebra	J31	Fun with Newtonian Physics	M44	Technology: Complex Problems, Simple Solutions	S60	NEW! Improvement Science
E18	NEW! Geology: Getting to the Core of the Matter	J33	Thinking Inside, Outside, and Beyond the Box				
E20	SIG Monopoly: Money in the Game of Life	J37	NEW LEVEL! Facts, Stats, and Studies: The Methods of Research	M45	NEW! DNA Diagnostics	S62	Crime Scene Investigation
				A63	Digital Photography	A63	Digital Photography
A64	Two- and Three-D Media	A64	Two- and Three-D Media	A64	Two- and Three-D Media	A64	Two- and Three-D Media
LUNCH (12:00PM - 1:00PM)							
PERIOD THREE (1:00PM - 2:30PM)							
E13	NEW! Writing the Future	J32	NEW! Biomechanics of Living Creatures	M40	Engineering in Action	S51	Writing Matters
E17	Planetary Science: Putting the "U" in Universe	J34	Taking Stock in Money Matters	M50	NEW! Synaptic Plasticity: The Adaptable Brain	S58	Biopsychology
A65	Animation & Claymation	A65	Animation & Claymation	A66	Improv 101: You'll Laugh, You'll Cry, You'll Improve!	A66	Improv 101: You'll Laugh, You'll Cry, You'll Improve!
R70	Fencing: Footwork to Foils	R70	Fencing: Footwork to Foils	R70	Fencing: Footwork to Foils	R70	Fencing: Footwork to Foils
PERIOD FOUR (2:45PM - 4:15PM)							
E19	Spying: Secrets, Surveillance, and Science	J26	NEW! Immortal Fiction	M41	Medical Microbiology	S54	NEW! The Mathemati-CS of CompSci
E21	NEW! Aspiring Architects	J29	Algebraic Expressions	M49	NEW! Working the Future	S59	Bioengineering: Technology for the Future
A67	Broadway Beckons	A67	Broadway Beckons	A67	Broadway Beckons	A67	Broadway Beckons
R71	Self-Defense Sense	R71	Self-Defense Sense	R71	Self-Defense Sense	R71	Self-Defense Sense



University of Miami

Coral Gables, FL

Session Dates

July 12 - August 1, 2015

Open to:

Students who will be ages 9-17
by August 31, 2015

Program Fees:

Residential: \$3,995
Extended Commuter: \$3,195
Commuter: \$2,495

About The University of Miami

A private research university with more than 15,000 students from around the world, the University of Miami is a vibrant and diverse academic community focused on teaching and learning and the discovery of new knowledge.

The University comprises 11 schools and colleges serving undergraduate and graduate students in more than 180 majors and programs. UM is a major research university engaged in \$360 million in research and sponsored program expenditures a year. While the majority of this work is housed at the Miller School of Medicine, investigators conduct dozens of studies in other areas, including marine science, engineering, education, and psychology.

The main campus is located in the city of Coral Gables, in Miami-Dade County. The world-famous climate and numerous other attractions make South Florida a unique place to experience, whether it's the beaches of South Beach, cultural venues such as Lowe Art Museum on campus or the Perez Art Museum Miami on the shores of Biscayne Bay, or visiting the shops and restaurants along Coral Gables' Miracle Mile or nearby CocoWalk in Coconut Grove. Enthusiasts of sports, arts and the subtropical environment will all find something intriguing in close proximity to the campus.

Please note: SIG is a program of NSGT, a 501(c)(3) organization, separately administered and operated by SIG, and is independent of any existing higher education program associated with any of our host campuses.

Fun Facts!

- University of Miami ranked No. 47 in the U.S. News & World Reports "Best National Universities" listings for 2014.
- Over 1,430 degree undergraduates participate in the Honors Program. UM has 52 academic honor societies, including Phi Beta Kappa.
- 2015 is our first year at the University of Miami. A **SIG Day Program** is also available for students ages 5 through 8. See page 40 for more information.

University of Miami Course Schedule

E COURSES (9 - 10)		J COURSES (11 - 12)		M COURSES (13 - 14)		S COURSES (15 - 17)	
PERIOD ONE (8:45AM - 10:15AM)							
E14	Philosophy: Diving into Deep Thoughts	J27	NEW! Legally Speaking	M43	Buy! Sell! Trade! Brush Up on Business Math!	S57	Pharmacology
E16	NEW! Unlocking the Genetic Code	J28	Chemistry: The Essential Element	M47	Theories of Time Travel: Spacetime Physics and Wormholes	S61	The Macroeconomics of Globalization
		J36	Future City Design				
A68	NEW LEVEL! The Art of Making a Short Film	A68	NEW LEVEL! The Art of Making a Short Film	A68	The Art of Making a Short Film	A68	The Art of Making a Short Film
R69	Fit for Life	R69	Fit for Life	R69	Fit for Life	R69	Fit for Life
PERIOD TWO (10:30AM - 12:00PM)							
E15	Anticipating Algebra	J31	Fun with Newtonian Physics	M44	Technology: Complex Problems, Simple Solutions	S60	NEW! Improvement Science
E18	NEW! Geology: Getting to the Core of the Matter	J33	Thinking Inside, Outside, and Beyond the Box	M45	NEW! DNA Diagnostics	S62	Crime Scene Investigation
		J37	NEW LEVEL! Facts, Stats, and Studies: The Methods of Research				
E21	NEW! Aspiring Architects			A63	Digital Photography	A63	Digital Photography
A64	Two- and Three-D Media	A64	Two- and Three-D Media	A64	Two- and Three-D Media	A64	Two- and Three-D Media
LUNCH (12:00PM - 1:00PM)							
PERIOD THREE (1:00PM - 2:30PM)							
E13	NEW! Writing the Future	J32	NEW! Biomechanics of Living Creatures	M40	Engineering in Action	S51	Writing Matters
E17	Planetary Science: Putting the "U" in Universe	J34	Taking Stock in Money Matters	M48	International Relations: Ordering a New World	S58	Biopsychology
		J35	Move Over Sherlock				
A65	Animation & Claymation	A65	Animation & Claymation	A66	Improv 101: You'll Laugh, You'll Cry, You'll Improvise!	A66	Improv 101: You'll Laugh, You'll Cry, You'll Improvise!
R70	Fencing: Footwork to Foils	R70	Fencing: Footwork to Foils	R70	Fencing: Footwork to Foils	R70	Fencing: Footwork to Foils
PERIOD FOUR (2:45PM - 4:15PM)							
E19	Spying: Secrets, Surveillance, and Science	J26	NEW! Immortal Fiction	M41	Medical Microbiology	S54	NEW! The Mathematics of CompSci
E20	SIG Monopoly: Money in the Game of Life	J29	Algebraic Expressions	M46	Roots of Human Behavior	S59	Bioengineering: Technology for the Future
		J30	Online Design: Untangling the Web				
A67	Broadway Beckons	A67	Broadway Beckons	A67	Broadway Beckons	A67	Broadway Beckons
R71	Self-Defense Sense	R71	Self-Defense Sense	R71	Self-Defense Sense	R71	Self-Defense Sense



Vassar College

Poughkeepsie, NY



Session Dates

July 12 - August 1, 2015

Open to:

Students who will be ages 9 - 14
by August 31, 2015

Program Fees:

Residential: \$3,995
Extended Commuter: \$3,195
Commuter: \$2,495

About Vassar College

Vassar College, founded in 1861, is a highly-selective, residential, coeducational liberal arts college. Ranked 13th in the U.S. News and World Report's Best National Liberal Arts College for 2014, Vassar is renowned for pioneering achievements in education, for its long history of curricular innovation, and for the beauty of its campus. Among the 100 buildings on campus are examples of a variety of architectural styles ranging from that of the Tuileries to Modernists.

Fun Facts!

- Vassar's buildings are an eclectic blend of architectural style, including the famous Great Window, commissioned from Louis Comfort Tiffany.
- While visiting the campus you can run or walk through the trails at the Vassar Farm, which is open to the public year round.
- SIG has been on campus since 1986!

Please note: SIG is a program of NSGT, a 501(c)(3) organization, separately administered and operated by SIG, and is independent of any existing higher education program associated with any of our host campuses.

“Raven absolutely loved attending SIG at Vassar. As a gifted student, it is not always apparent exactly how far she can fly in a traditional school setting. However, SIG definitely raised the bar for her.”

– **Parents of Raven W.**
Alumna of SIG at Vassar

Vassar College Course Schedule

E COURSES (9 - 10)		J COURSES (11 - 12)		M COURSES (13 - 14)	
PERIOD ONE (8:45AM - 10:15AM)					
E14	Philosophy: Diving into Deep Thoughts	J27	NEW! Legally Speaking	M39	NEW! Creative Connections
E16	NEW! Unlocking the Genetic Code	J28	Chemistry: The Essential Element	M47	Theories of Time Travel: Spacetime Physics and Wormholes
		J36	Future City Design		
A68	NEW LEVEL! The Art of Making a Short Film	A68	NEW LEVEL! The Art of Making a Short Film	A68	The Art of Making a Short Film
R69	Fit for Life	R69	Fit for Life	R69	Fit for Life
PERIOD TWO (10:30AM - 12:00PM)					
E15	Anticipating Algebra	J31	Fun with Newtonian Physics	M44	Technology: Complex Problems, Simple Solutions
E18	NEW! Geology: Getting to the Core of the Matter	J33	Thinking Inside, Outside, and Beyond the Box	M45	NEW! DNA Diagnostics
		J37	NEW LEVEL! Facts, Stats, and Studies: The Methods of Research		
E20	SIG Monopoly: Money in the Game of Life	A63	Digital Photography	A63	Digital Photography
R71	Self-Defense Sense	R71	Self-Defense Sense	R71	Self-Defense Sense
LUNCH (12:00PM - 1:00PM)					
PERIOD THREE (1:00PM - 2:30PM)					
E13	NEW! Writing the Future	J32	NEW! Biomechanics of Living Creatures	M40	Engineering in Action
E17	Planetary Science: Putting the "U" in Universe	J34	Taking Stock in Money Matters	M50	NEW! Synaptic Plasticity: The Adaptable Brain
		J35	Move Over Sherlock		
A65	Animation & Claymation	A65	Animation & Claymation	A66	Improv 101: You'll Laugh, You'll Cry, You'll Improvise!
R70	Fencing: Footwork to Foils	R70	Fencing: Footwork to Foils	R70	Fencing: Footwork to Foils
PERIOD FOUR (2:45PM - 4:15PM)					
E19	Spying: Secrets, Surveillance, and Science	J26	NEW! Immortal Fiction	M41	Medical Microbiology
E21	NEW! Aspiring Architects	J29	Algebraic Expressions	M49	NEW! Working the Future
		J30	Online Design: Untangling the Web		
A64	Two- and Three-D Media	A64	Two- and Three-D Media	A64	Two- and Three-D Media
A67	Broadway Beckons	A67	Broadway Beckons	A67	Broadway Beckons
R71	Self-Defense Sense	R71	Self-Defense Sense	R71	Self-Defense Sense
R73	Tennis: Love and Lobby	R73	Tennis: Love and Lobby	R73	Tennis: Love and Lobby



Yale University I and II

New Haven, CT

US News &
World Reports

#3

National University
2014

Session Dates:

Session I: June 27 - July 17, 2015

Session II (SIG Global):
July 19 - August 8, 2015

Program Fees:

Residential: \$4,995

Extended Commuter: \$4,195

Commuter: \$3,295

Open to:

Students who will be ages 13 - 17
by August 31, 2015

About Yale University

Yale University, a private research university in New Haven, Connecticut, is a member of the Ivy League. Yale has produced many notable alumni, including five U.S. presidents, seventeen U.S. Supreme Court Justices, and several foreign heads of state. Yale's buildings, towers, lawns, courtyards, walkways, gates, and arches comprise what one architecture critic has called the most beautiful urban campus in America.

Fun Facts!

- Yale is ranked 3rd among national universities by U.S. News and World Reports in 2014.
- Founded in 1701, the university is the third-oldest institution of higher education in the United States.
- SIG has been on campus since 2011!

Please note: SIG is a program of NSGT, a 501(c)(3) organization, separately administered and operated by SIG, and is independent of any existing higher education program associated with any of our host campuses.

“The SIG program is instrumental in preparing children for college.”

– Parent, Najjiyya S.,
Alumna of SIG at Yale University

Available at Yale University II

SIG Global

While all SIG campuses are open to international students, the second session of SIG at Yale University invites a larger percentage of international students to apply. SIG Global is intended to provide an experience where students can enjoy immersion in international citizenry, pursue topics of global interest in-depth, and fully realize the intense nature of our flattened world.

English Language Learners (ELL) Lab

For students from around the globe looking for the rigorous academic challenge that SIG provides, as well as social interaction with their global peers and an English language study program, SIG is pleased to provide an English Language Learners (ELL) course offered during Yale's SIG Global.

Students must be eligible for the SIG program per the eligibility requirements, however this program will accept students who also require English language support services. Students for whom English is not their first language have the option of taking an ELL Lab (English Language Learners) during one period to improve their English writing and speaking skills and enhance their total SIG experience.

For more information on enrolling as an international student, please turn to page 37.

Yale University I and II Course Schedule

M COURSES (13 - 14)		S COURSES (15 - 17)	
PERIOD ONE (8:45AM - 10:15AM)			
M39 NEW! Creative Connections		S53 Word Origins for SAT Success	
M40 Engineering in Action		S54 NEW! Mathemati-CS of CompSci	
M45 NEW! DNA Diagnostics		S57 Pharmacology	
M47 Theories of Time Travel: Spacetime Physics and Wormholes		S60 NEW! Improvement Science	
		S61 The Macroeconomics of Globalization	
A68 The Art of Making a Short Film		A68 The Art of Making a Short Film	
R69 Fit for Life		R69 Fit for Life	
R70 Fencing: Footwork to Foils		R70 Fencing: Footwork to Foils	
ELL English Language Learners Lab *		ELL English Language Learners Lab *	
PERIOD TWO (10:30AM - 12:00PM)			
M38 The Writer's Word Palette		S51 Writing Matters	
M42 Mathematical Masterpieces: Fermi and the Golden Ratio		S55 Jump Start Your SAT Math Score	
M44 Technology: Complex Problems, Simple Solutions		S56 Cosmic Proportions: The Origin and Structure of the Universe	
M49 NEW! Working the Future		S59 Bioengineering: Technology for the Future	
		S60 NEW! Improvement Science	
A66 Improv 101: You'll Laugh, You'll Cry, You'll Improvise!		A66 Improv 101: You'll Laugh, You'll Cry, You'll Improvise!	
A68 The Art of Making a Short Film		A68 The Art of Making a Short Film	
R70 Fencing: Footwork to Foils		R70 Fencing: Footwork to Foils	
ELL English Language Learners Lab *		ELL English Language Learners Lab *	
LUNCH (12:00PM - 1:00PM)			
PERIOD THREE (1:00PM - 2:30PM)			
M40 Engineering in Action		S51 Writing Matters	
M41 Medical Microbiology		S55 Jump Start Your SAT Math Score	
M46 Roots of Human Behavior		S57 Pharmacology	
M48 International Relations: Ordering a New World		S58 Biopsychology	
		S62 Crime Scene Investigation	
A63 Digital Photography		A63 Digital Photography	
A66 Improv 101: You'll Laugh, You'll Cry, You'll Improvise!		A66 Improv 101: You'll Laugh, You'll Cry, You'll Improvise!	
R71 Self-Defense Sense		R71 Self-Defense Sense	
ELL English Language Learners Lab *		ELL English Language Learners Lab *	
PERIOD FOUR (2:45PM - 4:15PM)			
M41 Medical Microbiology		S52 College Prep	
M43 Buy! Sell! Trade! Brush Up on Business Math!		S53 Word Origins for SAT Success	
M44 Technology: Complex Problems, Simple Solutions		S54 NEW! Mathemati-CS of CompSci	
M50 NEW! Synaptic Plasticity: The Adaptable Brain		S59 Bioengineering: Technology for the Future	
		S62 Crime Scene Investigation	
A63 Digital Photography		A63 Digital Photography	
A67 Broadway Beckons		A67 Broadway Beckons	
R71 Self-Defense Sense		R71 Self-Defense Sense	
ELL English Language Learners Lab *		ELL English Language Learners Lab *	

* English Language Learners Lab at Yale University II only.



“

The SIG Summer program at Yale provided our child not only with a challenging academic program, but also with a little insight of what “future” college life (attending classes, studying, dorm life, etc.) is all about. Most importantly, the friendships she developed with other students/campers from all over this country as well as from around the world will serve as an invaluable tool for continued learning and socializing.”

– Parent of Marisa, SIG Alumna,
SIG at Yale University Session I

International Student Information

We welcome our international students (any student requiring a visa to attend) to SIG and value the richness of diversity in culture and orientation they bring to our programs. For complete guidelines to assist you in the application process, please visit our website. Here is some basic information.

Enrollment Process

- For international students, the eligibility processes for domestic students on page 5 will apply.
- Students need a high level of English language proficiency in speaking and writing to integrate successfully into the SIG academic program.
- All international applications must be received by April 15, as there is limited enrollment accepted per country per campus.
- We recommend that students check with their embassy regarding local visa requirements. All payments are due in U.S. dollars and must be received no later than May 31. Please note there is an additional \$250 international student fee (only for students traveling with a visa). This fee includes bedding and additional international student insurance, which is required.

Campus-Related

- At the beginning of the program, the Residential Life Dean will ensure that the students' passports and valuables are collected during registration, safely stored, and returned at the end of the session.

Travel Arrangements

- SIG will assist with travel arrangements from airports to campuses only if requests and flight details are communicated at least one month in advance. All students are responsible for making their own air travel arrangements. Visit GiftedStudy.org for more information on our Meet and Greet Services.



Program Fees and Payment Schedule

PROGRAM TYPE/FEE		PROGRAM PAYMENT SCHEDULE		
Program Type	Program Fee	Application Fee <i>Submit with application (non-refundable)</i>	First Payment <i>Due within 2 weeks of acceptance notification</i>	Final Payment <i>Due 45 days in advance of program start date**</i>
Residential	\$3,995	\$95	\$2,000	\$1,995 Bryn Mawr, Emory, Vassar, University of Chicago, and University of Miami
	\$4,995	\$95	\$2,500	\$2,495 UC Berkeley, UCLA, and Yale
	\$5,495	\$95	\$3,000	\$2,495 Princeton
Extended Commuter	\$3,195	\$95	\$1,500	\$1,695 Bryn Mawr, Emory, Vassar, University of Chicago, and University of Miami
	\$4,195	\$95	\$2,000	\$2,195 UC Berkeley, UCLA, and Yale
	\$4,695	\$95	\$2,500	\$2,195 Princeton
Commuter*	\$2,495	\$95	\$1,000	\$1,495 Bryn Mawr, Emory, Vassar, University of Chicago, and University of Miami
	\$3,295	\$95	\$1,500	\$1,795 UC Berkeley, UCLA, and Yale

* Not available at Princeton, only Extended Commuter Program (limited number)

** A \$50 late payment fee will be incurred if payment isn't made in full 45 days in advance of the program start date. SIG accepts checks, money orders, wire transfers, Visa, MasterCard and American Express credit cards. Please be advised that returned checks and declined credit cards will incur a \$25 charge per occurrence.

Program Fees do not include \$250 International Student Fee.

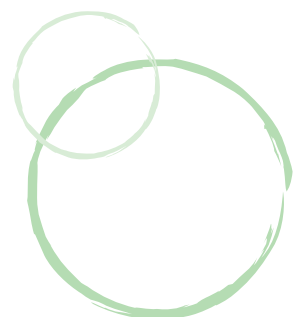
Program Fee Includes:

	Residential	Extended Commuter	Commuter
Academic Program	✓	✓	✓
Course Materials*	✓	✓	✓
All Room and Board Charges*	✓		
Recreational Hour Program	✓	✓	✓
Evening Activities	✓	✓	
Saturday Getaway Trip	✓	✓	

World Class Coverage Insurance is available for purchase for all programs for an additional cost of \$75 for domestic students. International Students are automatically enrolled through the International Student Fee.

+ Material fees of \$25 apply for some courses, see pages 11-17.

* Some campuses offer some single dorm rooms. Single rooms are available on a first come, first served basis for a fee of \$250. If we are unable to accommodate your single room request and you have paid the extra \$250, this amount will be refunded.



Program fees do not include:

- Non-refundable application fee (\$95 fee)
- Optional NSGT membership (\$35 fee), see page 42
- International resident fee (\$250 fee), see page 37
- Transportation to and from SIG campus (varies); visit GiftedStudy.org for more details
- Individual laundry expense (varies)
- Personal spending money (varies)
- Books* for selected courses (\$10 - \$30 each course)
- Optional World Class Coverage Insurance Plan (\$75 fee)
- Material fees, see pages 11-17
- Campus Switch Fee for students who switch campuses after being accepted (\$25 fee)

* Books will be available for purchase on the day of registration for courses requiring them.

Refund Policy

Because SIG must hire staff and confirm space at its host institutions long before the start of the summer sessions, we are unable to make program refunds to students who cancel within 15 days of the program start date. Please see refund information listed below:

- Prior to 45 days of program start** - 100% refund
- 31-44 days prior to program start** - 75% refund
- 15-30 days prior to program start** - 50% refund
- Within 15 days prior to program start** - no refund

If a program is canceled by SIG before the session begins, SIG will issue a refund of program fees paid. If a program is terminated during the session, SIG will consider the circumstances and may, in its sole discretion, issue a partial refund or credit. Under no circumstances, medical or otherwise, will SIG refund the \$95 application fee due at the time the application is submitted. Refunds are not provided once the session begins.

Medical Withdrawal

The SIG World Class Coverage Insurance Protection Plan provides some tuition relief in the event of a medical withdrawal both prior to and during the SIG program. It also provides medical coverage in such an event. For more information on the plan please visit GiftedStudy.org

Program Insurance*

SIG offers parents and students peace of mind and financial reassurance with SIG's World Class Coverage Insurance Plan. This plan is available to domestic students and provides an assortment of benefits which can be reviewed on our website. Additionally, a World Class Coverage policy document will be available on the SIG Student Portal.

*A nominal fee of \$75 is charged for this insurance coverage for domestic students. International students automatically receive insurance and its benefits through the international student fee.

Program Fee Reductions

Earn a savings on your 2015 SIG program fee* if you meet any of the following criteria:

Criteria for Discount	Discount
Returning SIG Residential Student**	- \$250
Returning SIG Commuter Student**	- \$125
Each Enrolled Sibling	- \$100
Attend a second SIG session	- \$250

* Discounts cannot be applied towards the application fee. All discounts will be applied to your final balance.

** Returning student discounts only available until April 1, 2015.

Other Programs of NSGT

SIG Day Programs

Ages 5-12 | \$2,295*

The Summer Institute for the Gifted Day Program provides instruction in several dozen courses during its regular academic schedule and offers recreational activities every day. Courses are taught at levels appropriate for gifted students who are ages 5-12, engaging them in humanities, mathematics, sciences, and multi-disciplinary courses. Please see individual campuses for ages specific to each campus.

* Lunch is provided at all campuses for full program students. Half day options are offered at all sites, cost \$1,098 and do not include lunch.



Campus	Location	2015 Dates	Ages
Boston University Academy	Boston, MA	July 6 - July 24	5-12
Bryn Mawr College**	Bryn Mawr, PA	July 6 - July 24	5-8
Corbett Prep of IDS	Tampa, FL	July 6 - July 24	5-12
Emory University**	Atlanta, GA	June 22 - July 10	5-8
Fairfield University	Fairfield, CT	July 20 - August 7	5-12
The Hudson School	Hoboken, NJ	July 6 - July 24	5-12
Oak Hill Academy	Lincroft, NJ	July 6 - July 24	5-12
Out-of-Door Academy	Sarasota, FL	June 15 - July 3	5-12
The Overlake School	Redmond, WA	June 29 - July 17	5-12
Rippowam Cisqua School	Mount Kisco, NY	July 6 - July 24	5 -12
Sarah Lawrence College	Bronxville, NY	June 29 - July 17	5-12
Sierra Canyon School	Chatsworth, CA	July 13 - July 31	5-12
Stuart Country Day School	Princeton, NJ	July 13 - July 31	5-12
University of Miami**	Coral Gables, FL	July 13 - July 31	5-8
Weiss School	Palm Beach Gardens, FL	June 22 - July 10	5-12
The Woods Academy	Bethesda, MD	June 29 - July 17	5-12

** Ages 5 - 8 only.

SIG Online Courses

Ages 7 - 12 | \$425 + \$25 application fee

The SIG Online Learning Program is an enriching eight-week online program for SIG-eligible students. These courses offer students curriculum beyond what is offered during the regular school day, are wide-ranging in potential interest areas for individualized learning, and engage students in distance learning while applying core curriculum content through writing, researching, analyzing, reasoning, and questioning.

Please visit the SIG Online section of our website for a listing of current courses for our fall, spring, and summer sessions!

AIFS Family of Programs

A special benefit enjoyed by SIG is its close relationship with the American Institute For Foreign Study (AIFS), Inc. AIFS is one of the oldest and largest organizations providing cultural exchange and study abroad programs. For more information on AIFS programs, please visit www.aifs.com.

More than 1.5 million people from 100 countries have participated in AIFS programs since its founding in 1964.

SIG Students Save!

Participating SIG students receive a \$1,000 discount on any semester study abroad program or a \$500 discount on any summer program with AIFS Study Abroad.

How to Apply

Four Easy Steps!

Deadline for Domestic Students - **May 15, 2015**

Deadline for International Students - **April 15, 2015**

Apply Online (preferred method, go green!)

A \$95 non-refundable application fee is due with application.

1. Visit GiftedStudy.org.
2. Click the "Apply Now!" button.
3. Complete the online application and click the submit button.
4. Email eligibility documents to admissions@giftedstudy.org if you did not attach them during the application process and you are a first-year applicant.

Apply By E-mail

A \$95 non-refundable application fee is due with application.

1. Visit GiftedStudy.org.
2. Click the "Apply Now!" button.
3. Download and complete the fillable Residential and Commuter program application.
4. Email your completed application to admissions@giftedstudy.org along with eligibility documents if you are a first-year applicant.

Apply By Mail

A \$95 non-refundable application fee is due with application.

1. Visit GiftedStudy.org.
2. Click the "Apply Now!" button.
3. Download and complete the fillable Residential and Commuter program application.
4. Mail completed application with payment and eligibility documents to 1 High Ridge Park, Stamford, CT 06905.

Please note: Returning students do not need to re-submit eligibility documents. New students should make every effort to submit eligibility documents at the time of application to facilitate processing.

Find Us Online

Stay up to date on the latest SIG news, events and photos!



"Like us" on Facebook
[SummerInstituteForTheGifted](#)



Follow us on Twitter
[@SIGifted](#)



Bring a friend!

Contact SIG and tell us who you think would benefit from the SIG program!

Our Mission

The mission of National Society for the Gifted and Talented (NSGT) is to advance the development of gifted, talented, and high-potential youth, in the United States and abroad, through opportunities, advocacy, and exemplary programs and practices.

Become a Member of NSGT

The NSGT membership fee for SIG students is \$35 and entitles members to multiple benefits including:

- A certificate of recognition affirming their place among the most highly able students in the country.
- Access to the nation's school database containing gifted programs registered with the U.S. Department of Education.
- Scholarship opportunities for student projects and/or programs students wish to attend.

The NSGT/SIG Financial Assistance Fund affords gifted and academically talented students from all socio-economic backgrounds the opportunity to attend programs sponsored by the Summer Institute for the Gifted.

How can you help gifted students through our Financial Assistance Fund?

Donate Directly to NSGT

NSGT's ability to support student projects and scholarships and to increase student services is dependent upon donations from individuals, organizations, foundations, and corporations. Our aim is to provide scholarships and opportunities for students in need. We are especially appreciative of the many generous donors listed who have shared their resources with us. If you would like to contribute financially to NSGT's goals in any way, we would love to hear from you. 100% of funds raised are utilized for financial assistance awards. As NSGT is a charitable organization, donations are tax deductible to the extent provided by law. Donations are welcomed online at nsgt.org, or by check to NSGT at 1 High Ridge Park Stamford, CT 06905.

Donate while you shop!

We also encourage online shoppers to shop at their favorite vendors through Give Back America, Amazon Smile, and the GoodShop section of GoodSearch. NSGT will receive a commission from any purchases made through these websites at no additional cost to you. It's an easy way to contribute to NSGT at no extra expense or inconvenience.

Other ways to donate:

- When applying online to a SIG program you will be given an opportunity to donate to the NSGT scholarship fund.
- NSGT welcomes financial and auction donations at annual events designed to raise money for scholarships.

For more information about NSGT and how to join:
Call (800) 572-6748 or visit us at NSGT.org

Thank you to our 2014 scholarship donors:

Carmel Hill Fund Education Programs

Frederick H. Leonhardt Fund - New York
Community Trust (NYCT)

Jack Kent Cooke Foundation

Minds Matter (Chicago, San Francisco
and Los Angeles chapters)

NSGT Trustees, donors and members



Need-Based Financial Assistance & Scholarships

SIG/NSGT, along with the support of additional donors, is pleased to be able to offer financial assistance to some students who wish to attend our program and ask that you please read the following information carefully before applying for financial assistance from SIG/NSGT.

Availability of SIG/NSGT financial assistance varies by campus and is not intended to cover the total cost of the student's attendance at SIG.

Financial assistance awards serve as the final payment on your account and are not attributed until all other fees are paid. You must continue to adhere to the SIG payment schedule while you are awaiting our decision.

To qualify for assistance, you must send a completed SIG program application and include the non-refundable \$95 SIG application fee. SIG will begin accepting financial assistance applications on December 1, 2014.

Please check our website periodically for updates and information on financial assistance, scholarship opportunities and fundraising ideas.

Board of Trustees

Judith Parker, Ph.D.
Chair, NSGT
Executive Director, Carmel Hill
Fund Education Program

Barbara Swicord, Ed.D.
Executive Director, NSGT
President and CEO, SIG

Jack Burg
Executive Vice President, Chief
Operating Officer, Chief Financial
Officer, American Institute For
Foreign Study®

Ailsa Brookes
Senior Vice President
College Division AIFS

Brooke Burling
Technical Director,
Two Planks Theater Co.

Benjamin Davenport
Principal, Eastern Middle School
(retired), Riverside, CT

Rachael Sydnes
Alumna, SIG
Product Manager, IBM

Julia To Dutka, Ed.D.
Strategist, CGFNS
International, Inc.

William L. Gertz
President and Chief Executive
Officer, American Institute For
Foreign Study®

Matthew Greene, Ph.D.
Educational Director, Howard
Greene and Associates

Joseph S. Renzulli, Ed.D.
Director, National Research Cen-
ter for the Gifted and Talented,
University of Connecticut

Leonard M. Robinson
Executive Director,
New Jersey YMHA-YWHA Camps

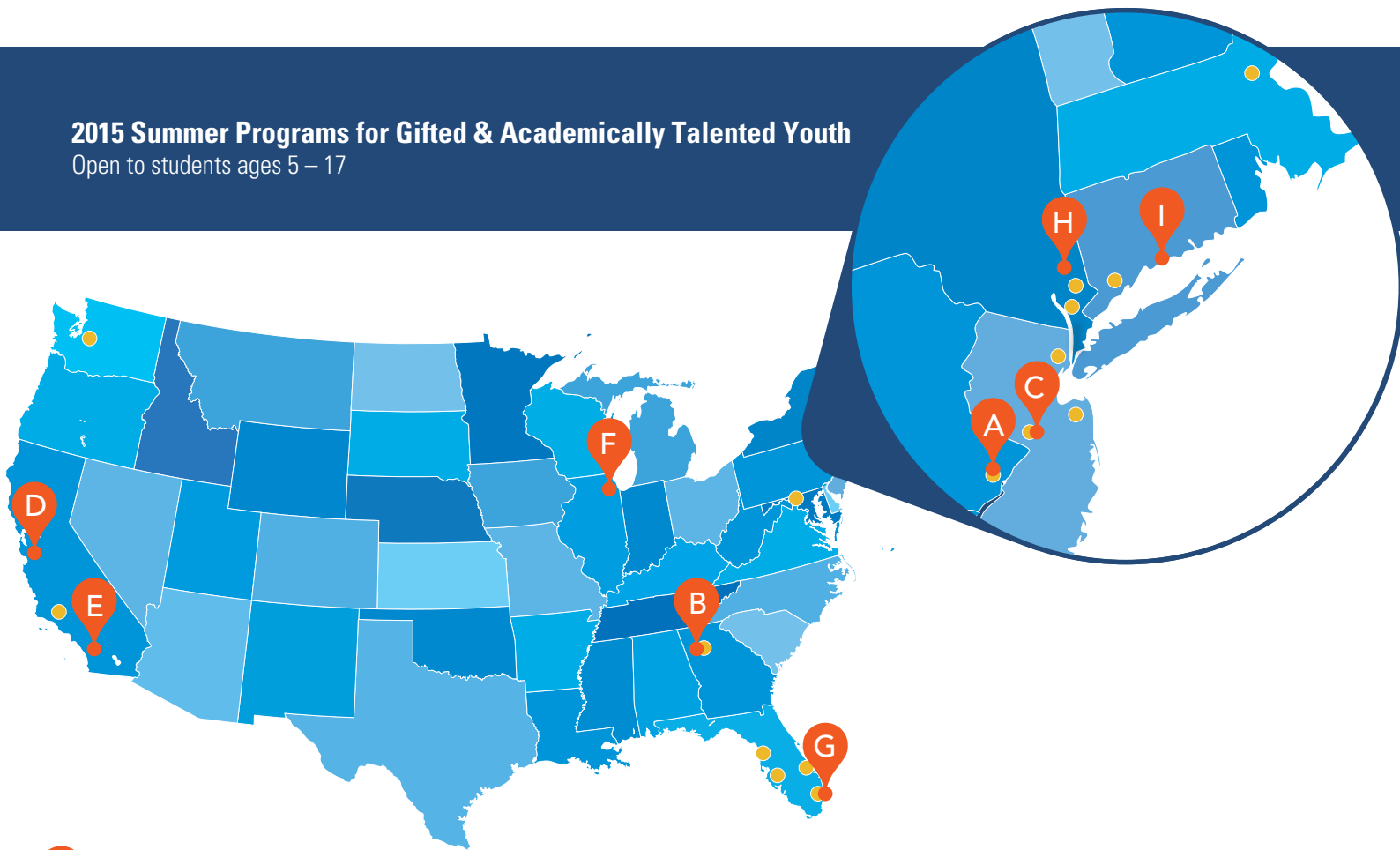
Andi Stix, Ed.D., PCC
G-Tec Kids and the Synergy
Challenge

Sir Cyril Taylor, GBE
Chairman, American Institute
For Foreign Study®

Abby Weisberg
Gifted Education Advocate
SIG Parent

2015 Summer Programs for Gifted & Academically Talented Youth

Open to students ages 5 – 17



Residential Programs

- | | | |
|---|---|--|
| <p>A Bryn Mawr College
Bryn Mawr, PA
July 5 - July 25, 2015</p> | <p>D UC Berkeley
Berkeley, CA
I: June 20 - July 10, 2015
II: July 12 - August 1, 2015</p> | <p>New! University of Miami
Coral Gables, FL
July 12 - August 1, 2015</p> |
| <p>B Emory University
Atlanta, GA
June 21 - July 11, 2015</p> | <p>E UCLA
Los Angeles, CA
July 5 - July 24, 2015</p> | <p>H Vassar College
Poughkeepsie, NY
July 12 - August 1, 2015</p> |
| <p>C Princeton University
Princeton, NJ
July 26 - August 15, 2015</p> | <p>F University of Chicago
Chicago, IL
July 19 - August 8, 2015</p> | <p>I Yale University
New Haven, CT
I: June 27 - July 17, 2015
II: July 19 - August 8, 2015</p> |

Day Programs

- | | | | |
|---|--|--|---|
| <p>● Boston University Academy
Boston, MA</p> | <p>● The Hudson School
Hoboken, NJ</p> | <p>● Sarah Lawrence College
Bronxville, NY</p> | <p>● New! The Weiss School
Palm Beach Gardens, FL</p> |
| <p>● Bryn Mawr College
Bryn Mawr, PA</p> | <p>● Oak Hill Academy
Lincroft, NJ</p> | <p>● Sierra Canyon School
Chatsworth, CA</p> | |
| <p>● Corbett Preparatory School of IDS
Tampa, FL</p> | <p>● Out-of-Door Academy
Sarasota, FL</p> | <p>● Stuart Country Day School
Princeton, NJ</p> | |
| <p>● Emory University
Atlanta, GA</p> | <p>● The Overlake School
Redmond, WA</p> | <p>● New! University of Miami
Coral Gables, FL</p> | |
| <p>● Fairfield University
Fairfield, CT</p> | <p>● Rippowam Cisqua School
Mount Kisco, NY</p> | <p>● The Woods Academy
Bethesda, MD</p> | |



1 High Ridge Park
Stamford, CT 06905
(866) 303-4744

GiftedStudy.org

For more Day Program information see page 40 of this catalog.